

AUCTION 3

13th September 1996

A COLLECTION OF ROMAN REPUBLICAN  
STRUCK BRONZE COINAGE



*Italo Vecchi LTD*

*London*



D

AUCTION 3  
Friday 13th September 1996  
at  
Brown's Hotel  
21-24 Dover Street GB- London W1A 4SW  
Tel. (44 171) 493 60 20

A COLLECTION OF ROMAN REPUBLICAN  
STRUCK BRONZE COINAGE



*Italo Vecchi LTD*

35 Dover Street GB- London W1X 3RA

Tel. (44 171) 491 70 48 - Fax (44 171) 409 78 35

## Conditions of sale

The following conditions are acknowledged by all persons participating in the auction, whether bidding in the room on their own account or executing commissions for others or submitting bids by post or fax.

Estimates are in Pounds sterling and opening bids will be about 80% of estimate, unless there are higher offers. The purchase price together with a commission of 11.75% (inclusive of VAT) and sending charges where applicable is due and payable in British currency. The total price is due after the final bid and payable on delivery. Late payment of the invoice will incur interest at bank rate. Adjudication ensues after the highest bid and commits the bidder to accept the coins. Written bids have preference over room bids. The buyer cannot claim to act on behalf of a third person.

Authenticity of the coins is unconditionally guaranteed, without time limit. All identifications of the lots sold in this catalogue are statements of opinion and made in good faith.

Dispatching of purchases is normally registered and insured. The purchaser is responsible for any dues or taxes outside Great Britain and is advised to acquaint himself with the formalities. The auctioneer cannot be responsible for contraventions.

The auctioneer may change the sequence of the catalogue or unite lots; lots however cannot be divided. When, in error, text and plate numbers are mismatched, the text takes precedence. The auction is held in London and any legal questions arising shall be there determined.

## Time table

	Nos.
Friday, 13th September 1996 13.30 hrs.	1 - 646

The coins will be on view until 12th September, from 9.30-13.00 hrs. and 14.00-18.00 hrs. at our premises.

<b>Grades of Preservation</b>	<b>Erhaltungsgrade</b>	<b>Etats de conservation</b>	<b>Gradi di conservazione</b>
Proof	Polierte Platte	Flan bruni	Fondo specchio
FDC/UNC	Stempelglanz	Fdc Fleur de coin	Fdc Fior di conio
EF Extremely fine	Vorzüglich	Superbe	SPL Splendido
VF Very fine	SS Sehr schön	TB Très beau	BB Bellissimo
F Fine	Schön	B Beau	MB Molto bello
Fair	S. g. e.	T. b. c.	B Bello
Nearly	Fast	Presque	Quasi

## L'ÉVOLUTION DU MONNAYAGE FRAPPÉ EN BRONZE SOUS LA RÉPUBLIQUE ROMAINE

Michel Amandry

Conservateur général des bibliothèques

Директор du Département des Monnaies, Médailles et Antiques

Le monnayage romain n'apparaît que vers 300 av. J.-C. Date tardive, lorsque l'on sait que les cités grecques d'Italie du Sud frappaient monnaie depuis le VI<sup>e</sup> siècle.

Au cours du III<sup>e</sup> siècle, qui voit Rome étendre son pouvoir sur ces cités, après sa victoire sur Pyrrhus, et se heurter victorieusement à Carthage, trois types de monnayage sont émis: des lingots de bronze, connus sous le terme d'*aes signatum*; des monnaies frappées en argent et en bronze, dérivées du monnayage grec, et connues sous le vocable de « romano-campaniennes »; enfin de larges disques de bronze de forme ronde, coulés, appelés *aes grave*.

A l'origine, l'*as* pesait le poids de la livre romaine, soit 324,72 g. Ce monnayage servit de modèle pour le bronze coulé de Volterra, Ariminum (?), Iguvium, Tuder, Hatria, Luceria et Venusia.

Durant la première moitié du III<sup>e</sup> siècle, ces différents éléments circulèrent, dans des aires parfois distinctes, sans réelle relation entre eux. Ce n'est qu'avec la phase ROMA du monnayage romano-campanien et l'arrêt de la production d'*aes signatum* qu'une relation fixe fut établie entre argent et bronze et qu'on entreprit d'unifier ces monnayages en adoptant une typologie fixe sur tous les métaux: la tête de Janus apparut désormais au droit des didrachmes romano-campaniens (appelés alors *quadrigati* en raison de la présence d'un quadrigat au revers), du bronze (sur l'*as*) et des rares émissions d'or frappées au début de la deuxième guerre punique.

Ce système ne survécut toutefois pas à la deuxième guerre punique (218-201 avant J.-C.). Son financement, les dépenses militaires énormes qu'elle entraînait, eurent des effets catastrophiques sur les finances et les émissions monétaires romaines. Le poids des monnaies d'argent et de bronze fut réduit, des émissions exceptionnelles d'or furent frappées, le titre de l'argent chuta. Dans ce contexte difficile fut créé, sans doute vers 214/3 avant J.-C., le denier qui allait être frappé jusqu'au III<sup>e</sup> siècle après J.-C. Le denier et ses divisions, le quinaire et le sesterce, portaient une marque de valeur indiquant leur relation au bronze. Ainsi le denier valait 10 *as* (*X*) dont le poids était alors sextantaire (l'*as* pesait désormais 54.12 g, soit le poids d'un *sextans* lorsque l'*as* était libral, c'est à dire pesait le poids de la livre romaine), le quinaire 5 *as* (*V*) et le sesterce 2,5 *as* (*IIS* = 2 *as* et 1 *semis*).

Durant la première moitié du II<sup>e</sup> siècle, Rome produisit d'énormes quantités de monnaies en bronze, et surtout des *as*. Après 211, le poids de l'*as* était devenu très rapidement oncial. Ce fait, ajouté au déséquilibre de la masse monétaire en circulation vers 150, explique sans doute que le denier fut réévalué à 16 *as* en 141 avant J.-C. Cette relation ne devait plus être modifiée avant le III<sup>e</sup> siècle après J.-C. Ces bronzes circulèrent très longtemps, jusqu'à la fin de la République et même au début de l'Empire. En effet, à partir du milieu du II<sup>e</sup> siècle, les émissions de bronze furent beaucoup plus rares. Entre 138 et 115, l'*as* cessa d'être frappé, mais ses divisions habituelles - *semis*, *triens*, *quadrans*, *sextans* et *uncia* - ainsi que deux dénominations exceptionnelles - *dodrans* (9 *unciae*) et *bes* (8 *unciae*) - alimentèrent les marchés. Il est probable que le stock d'*as* alors en circulation était énorme, ce qui explique sans doute l'arrêt de sa production et l'accent mis sur la frappe de petites dénominations dont le besoin devait se faire sentir pour les transactions journalières.

En 91/90 avant J.-C., la *lex Papiria de assis pondere* réduisit le poids de l'*as* qui devint semioncial. Jusqu'en 82 avant J.-C., un certain nombre de monétaires produisirent des *as* (en cuivre pur et non plus en bronze au plomb) qui portaient des types variés (la typologie fixe de l'*as*, Janus/proue, étant alors abandonnée). Sylla mit fin à cette expérience et ces monnaies furent sans doute démonétisées.

Il faudra attendre 45 avant J.-C. pour voir la reprise de la production de monnaies de “bronze”. A cette date, les vieux as républicains du milieu du II<sup>e</sup> siècle avant J.-C. continuaient à circuler et, avec eux, de nombreuses imitations de semis et de quadrans. Entre 45 avant J.-C. et Actium, les différents *imperatores* firent frapper, autour de la Méditerranée, un certain nombre d’émissions de “bronze”.

L’émission d’orichalque du préfet C. Clovius, datée d’avril 46 à avril 45 en raison de la troisième charge de dictateur de César, a sans doute été frappée en Italie du nord; son poids en fait sans doute un dupondius. Le monnayage du préteur Q. Oppius (inconnu par ailleurs), également en orichalque, doit aussi être attribué à un atelier incertain d’Italie.

Les émissions au nom de Sextus Pompée sont postérieures à Munda. Celle qui est signée de son légat M. Eppius M. f. a toujours été attribuée à l’Espagne, mais 25 exemplaires de cette émission ont été trouvés à Morgantina. L’émission à la tête janiforme du Grand Pompée, produite en quantités considérables (193 coins de droit identifiés) présente des styles très divers: des monnaies de “bon style” et de style “dégénéré”. On a affirmé que les monnaies de “bon style” avaient été émises en Espagne et celles de style “dégénéré” en Sicile. Mais, là encore, toutes ces monnaies pourraient avoir été frappées en Sicile. La typologie de ces émissions est d’inspiration républicaine, avec la tête traditionnelle de Janus au droit (ou la tête janiforme du Grand Pompée) et la proue au revers.

En Orient, à la même époque, en 38/37, Antoine tente de créer un monnayage divisionnaire de caractère romain à types fixes. Il s’agit de ce que l’on appelle communément le monnayage des “préfets de la flotte” d’Antoine, signé de L. Calpurnius Bibulus, *praetor designatus*, L. Sempronius Atratinus, *augur* et *consul designatus* et M. Oppius Capito, *propraetor* et *praefectus classis*.

Bibulus, Atratinus et Capito émettent chacun une série constituée de six dénominations: sesterce, *tressis*, *dupondius*, *as*, *semis* et *quadrans*. Les types, pour chacune de ces séries, sont les mêmes et seule la légende du revers, qui porte le nom du magistrat émetteur, permet de distinguer chaque série, en dehors de leur style respectif, très particulier. Un effort remarquable avait été fait pour rendre facilement reconnaissables les différentes dénominations. Du sesterce au *quadrans*, Bibulus, Atratinus et Capito ont essayé d’exprimer de manières diverses la notion de sesterce et de ses divisions. Au revers, des marques de valeur ont été apposées, marquant les chiffres 4, 3, 2, 1, 1/2 et 1/4: chiffres grecs du sesterce à l’*as* - Δ, Γ, Β, Α -, marques de valeur latines - S et 3 globules - pour le *semis* et le *quadrans*; sur le sesterce, la marque latine IIS double la marque Δ. Des types secondaires accompagnent ces marques de valeur: sur le sesterce, un objet à peu près rectangulaire, sans doute un osselet, évoque par ses quatre côtés la valeur 4; sur le *tressis*, la triskelis, l’emblème à trois jambes humaines, symbolisant *Trinacria*, l’île à trois côtés; sur le *dupondius*, les bonnets des Dioscures; sur l’*as*, la tête de Gorgone. Les types eux-mêmes indiquent les valeurs: un quadriges d’hippocampes sur le sesterce, trois galères sous voile sur le *tressis*, deux sur le *dupondius*, une sur l’*as*, une proue sur le *semis*, un *acrostolium* sur le *quadrans*. Au droit, il était difficile d’obtenir la même “lisibilité”: il aurait fallu “disposer” de quatre personnages pour le sesterce et on ne voit pas quelles auraient pu être les solutions adoptées pour le *semis* et le *quadrans*: d’où, à l’exception du *tressis* qui porte trois têtes, un résultat moins convaincant que pour les revers.

La réforme d’Auguste, introduite à Rome entre 23 et 19, consista à faire désormais frapper un sesterce en bronze (et non plus en argent) et à différencier par leur contenu métallique le sesterce et le *dupondius* de l’*as* et du *quadrans*: orichalque pour les espèces divisionnaires les plus lourdes, cuivre pur pour les plus légères. Mais il faut minimiser l’apport novateur d’Auguste: les monnayages évoqués plus haut portent en germe la réforme du Princeps.



19



21



19



52



59



124



79



124



178



178



110



227



230



223



362



362





467



377



474



503



514



510



525





529



553



625



644



644

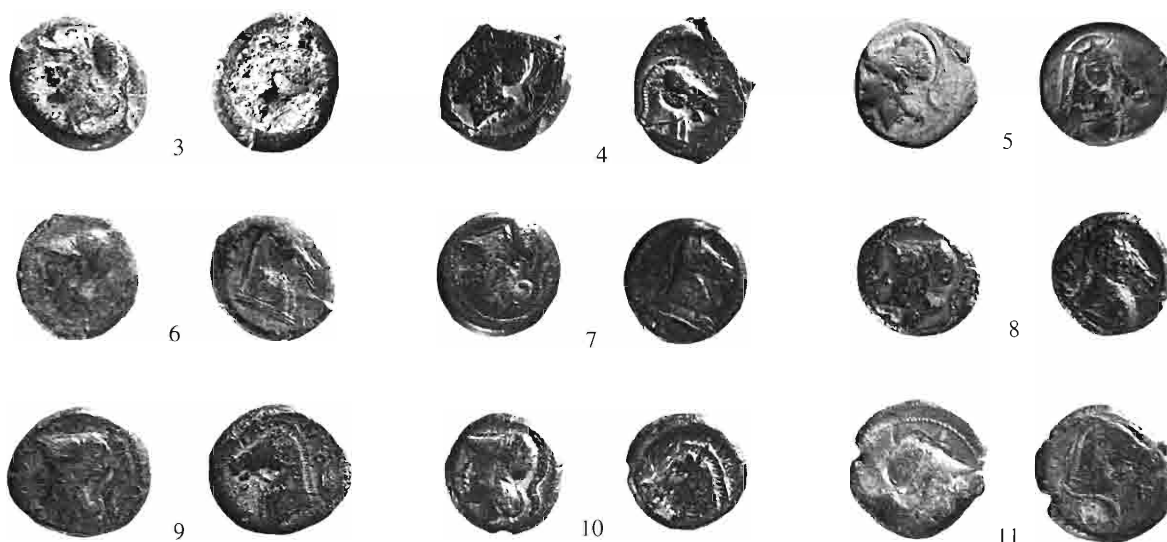
## Struck bronze of the Roman Republic



### The Romano-Campanian period, Neapolis c. 275-270

- 1 Diobol, 11.14 g. Head of nymph r. / Lion at bay r.; in exergue, ROMANO. *Cr. 16/1a.*  
*Rare. Reverse scratched, dark green patina, VF* £ 90
- 2 Another, 11.83 g. *Rare. Grey patina, nearly VF* £ 200

The weight standard of this issue is that of Neapolis at the advent of Pyrrhus in Italy. Rome's faithful ally had already produced bronze hemiobols with the legend ΡΩΜΑΙΩΝ in about 310-300 on a weight standard of about 3.3 g.



### Anonymous, Rome c. 273-269

- 3 Obol /quartuncia before 269, 6.21 g. Roma head l. / Horse head r. *Cr. 17/ 1a.* Uncleaned, Fair £ 30
- 4 Another, 5.87 g. Grey-black patina. A poor strike, VF £ 40
- 5 A third, 4.07 g. Blue-green patina, F / good F £ 40
- 6 A fourth, 5.23 g. Patinated. Fair/ F £ 30
- 7 A fifth, 5.46 g. Brassy black patina and well-centred, VF £ 75
- 8 A sixth, 4.71 g. Patinated, F / VF £ 30
- 9 Variant, 5.28 g., with horse head l. *Cr. 17/ 1b.* Dark brown tone, F £ 30
- 10 Another, 4.33 g., with varied legend. *Cr. 17/ 1c.* Blackish tone, nearly VF £ 40
- 11 Variant, 5.02 g., with Roma and horse heads r. *Cr. 17/ 1d.* Patinated, F £ 30

The ancient use of the word *litra*, a Greek term for a Sicilian bronze unit, in the context of a purely Romano-Etruscan coinage without on about the weight standard of the Neapolitan bronze obol, cf. SNG ANS 442-501, seems unlikely and certainly not contemporary usage. It may be better to describe this interesting military issue in Neapolitan or Roman weight terms and monetary units with their customary nomenclature. From c. 270-240 the weight standard of Neapolis is that of bronze obol of 5.4 g. while the Roman cast as fluctuated around 270 g. (10 unciae) indicating  $\pm 6.75$  g. as the theoretical weight of the quartuncia, comfortably accommodating the Rome and Cosa bronzes which range between 5 and 8 g. and a 1/16 uncia Roma/dog bronze with an average weight of 1.65 g. For this and the parallel issue of Cosa see: T. Buttery, *Cosa: The Coins*, Memoirs of the American Academy in Rome, 1980, pp. 17-27.



529



553



625



644



644

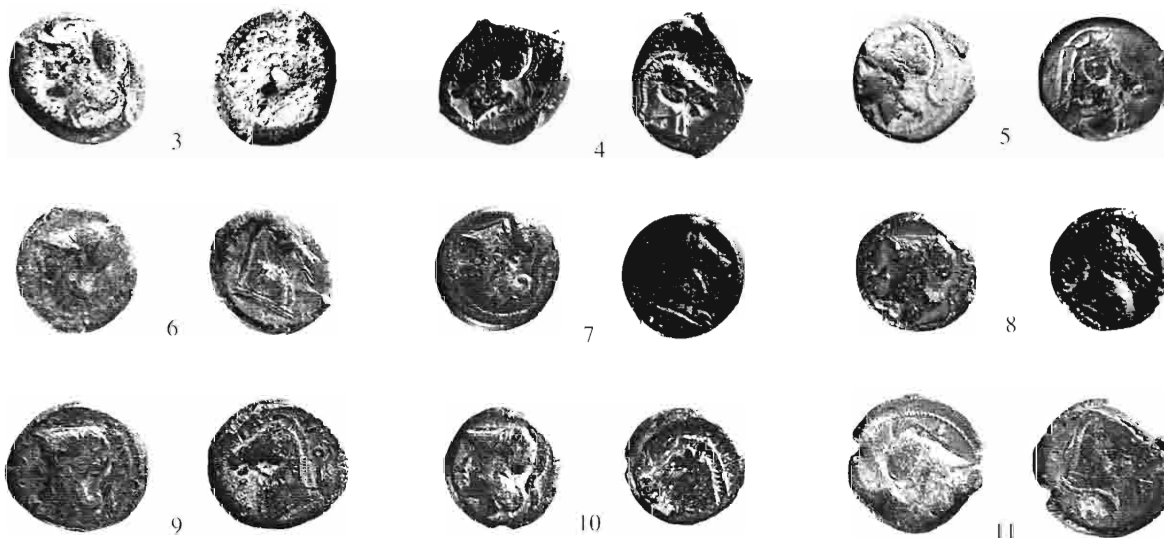
## Struck bronze of the Roman Republic



### The Romano-Campanian period, Neapolis c. 275-270

- 1 Diobol, 11.14 g. Head of nymph r. / Lion at bay r.; in exergue, ROMANO. *Cr.* 16/1a.  
*Rare.* Reverse scratched, dark green patina, VF £ 90
- 2 Another, 11.83 g. *Rare.* Grey patina, nearly VF £ 200

The weight standard of this issue is that of Neapolis at the advent of Pyrrhus in Italy. Rome's faithful ally had already produced bronze hemiobols with the legend ΡΩΜΑΙΩΝ in about 310-300 on a weight standard of about 3.3 g.



### Anonymous, Rome c. 273-269

- 3 Obol /quartuncia before 269, 6.21 g. Roma head l. / Horse head r. *Cr.* 17/ 1a. Uncleaned, Fair £ 30
- 4 Another, 5.87 g. Grey-black patina. A poor strike. VF £ 40
- 5 A third, 4.07 g. Blue-green patina, F / good F £ 40
- 6 A fourth, 5.23 g. Patinated. Fair/ F £ 30
- 7 A fifth, 5.46 g. Brassy black patina and well-centred, VF £ 75
- 8 A sixth, 4.71 g. Patinated. F / VF £ 30
- 9 Variant, 5.28 g., with horse head l. *Cr.* 17/ 1b. Dark brown tone, F £ 30
- 10 Another, 4.33 g., with varied legend. *Cr.* 17/ 1c. Blackish tone, nearly VF £ 40
- 11 Variant, 5.02 g., with Roma and horse heads r. *Cr.* 17/ 1d. Patinated, F £ 30

The ancient use of the word *litra*, a Greek term for a Sicilian bronze unit, in the context of a purely Romano-Etruscan coinage without on about the weight standard of the Neapolitan bronze obol, cf. SNG ANS 442-501, seems unlikely and certainly not contemporary usage. It may be better to describe this interesting military issue in Neapolitan or Roman weight terms and monetary units with their customary nomenclature. From c. 270-240 the weight standard of Neapolis is that of bronze obol of 5.4 g, while the Roman cast as fluctuated around 270 g. (10 unciae) indicating  $\pm 6.75$  g, as the theoretical weight of the quartuncia, comfortably accommodating the Rome and Cosa bronzes which range between 5 and 8 g, and a 1/16 uncia Roma/dog bronze with an average weight of 1.65 g. For this and the parallel issue of Cosa see: T. Buttrely, *Cosa: The Coins*, *Memoirs of the American Academy in Rome*, 1980, pp. 17-27.



12

**Anonymous, Messana 264**

- 12 Pentonkion (?) 264, 17.54 g., Messana. Minerva head l. / Spread eagle. ROMANO. Cr: 23/1.  
Extremely rare. Sage-green patina. VF €1,200



13



14



15



16



**Anonymous sickle issue, Rome c. 241-235**

- 13 Hemiobol / 1/8-uncia 241-235, 3.80 g. Mars head r. / Horse head r. with sickle. ROMANO. Cr: 25/3.  
Green-black patina. VF € 60
- 14 Another, 2.79 g. VF / Fair € 20
- 15 A third, 2.83 g. Earthy green patina. F / VF € 30
- 16 A fourth, 3.15 g. Khaki patina. VF € 30



17



18



19



20



**Anonymous, Rome c. 234-231**

- 17 Hemiobol / 1/8-uncia 234-231, 3.03 g. Apollo head r. / Bridled horse l. ROMANO. Cr: 26/3. Green-black patina. VF € 70
- 18 Another, 2.48 g. Black patina, nearly EF € 60
- 19 Tetartemorion / 1/16-uncia 234-231, 1.74 g. Roma head r. / Dog r. ROMA. Cr: 26/4.  
Lovely blue-green patina, EF / VF € 160
- 20 Another, 1.51 g. Black patina. VF € 60



21



22



23



24



25



**Anonymous club issue, Rome c. 230-226**

- 21 Hemiobol / 1/8-uncia 230-226, 2.39 g. Mars head r. with club/ Free horse r. with club. ROMA. Cr: 27/2.  
Lovely bright green patina. EF / VF € 200
- 22 Another, 3.17 g. Patinated. VF € 40
- 23 Obol / quartuncia 230-226, 5.38 g. Hercules head r. with club/ Pegasus r. with club Cr: 27/3.  
Rare. Good green patina. F / good F € 80
- 24 Another, 5.86 g. Rare. Black patina, good F € 50
- 25 A third, 5.09 g. Rare. Uncleaned. F € 40

**Semilibral standard, Rome c. 217-215**

26	Sextans, 23.99 g. Mercury head r., two pellets/ Prow r., two pellets, ROMA. <i>Cr.</i> 38/5. Blackish patina, good F	£ 60
27	Another, 24.24 g. Brown tone, good F	£ 50
28	Uncia, 13.68 g. Roma head l., one pellet/ Prow r., one pellet, ROMA. <i>Cr.</i> 38/6. Good brown tone, VF / good VF	£ 80
29	Another, 13.41 g. Blackish patina, good VF	£ 60
30	A third, 12.35 g. VF	£ 50
31	A fourth, 13.88 g. Pale sage-green patina, good style, VF	£ 80
32	A fifth, 11.51 g. Greyish black, VF	£ 100
33	Semuncia, 4.50 g. Mercury head r. / Prow r., ROMA. <i>Cr.</i> 38/7. Olive-green patina, about EF	£ 70
34	Another, 6.36 g. Apple-green patina, VF	£ 85
35	A third, 6.30 g. Patinated, VF	£ 50
36	A fourth, 6.44 g. Patinated, VF	£ 50
37	A fifth, 5.96 g. Nicely patinated, VF	£ 40
38	A sixth, 5.68 g. F	£ 20
39	A seventh, 5.96 g. Blue-green patina, good F / VF	£ 30
40	An eighth, 7.50 g. F	£ 20
41	A ninth, 6.78 g. Metallic brown tone, VF	£ 20
42	A tenth, 3.67 g. Patinated, F / VF	£ 30
43	An eleventh, 6.78 g. Crude style, patinated, good F	£ 20
44	A twelfth, 5.96 g. Well patinated, VF	£ 50
45	Quartuncia, 2.55 g. Roma head r. / Prow r., ROMA. <i>Cr.</i> 38/8. F / VF	£ 20
46	Another, 3.34 g. Good F	£ 30
47	A third, 2.82 g. Smoothed, VF	£ 40
48	A fourth, 3.38 g. Lovely pale brown tone, EF	£ 75
49	A fifth, 3.15 g. VF	£ 30
50	A sixth, 2.71 g. Dark green patina, good VF	£ 60



26



27





28



29



30



31



32



33



34



35



36



37



38



39



40



41



42



43



44



45



46



47



48



49



50







**Semilibral standard, new types, Rome c. 217-215**

- 51 Triens 217-215. 50.65 g. Juno/Tanit head r., four pellets/ Hercules clubbing centaur r., four pellets, ROMA. *Cr.* 39/ 1.  
*Rare.* F £ 400
- 52 Another. 50.85 g. Attractive dark green-brown tone. VF £1,500
- 53 A third. 45.59 g. Defective green patina. VF / F £ 500
- 54 Triens muled with reverse of the quadrans of the same series, 50.98 g. Juno/Tanit head r. / Bull charging r., three pellets, ROMA.  
*Cr.* – cf 39/ 1. (obv.) and 39/ 2 (rev.) *Unpublished.* Good dark green and black patina. about VF / F £2,000
- 55 Quadrans. 37.63 g. Hercules head r., three pellets. / Bull as previous *Cr.* 39/ 2.  
*Rare.* Magnificent olive-green patina, nearly EF £ 600
- 56 Another. 38.16 g. *Rare.* Much scraped, F £ 100
- 57 A third. 33.62 g. *Rare.* Scratched. Fair- F £ 100
- 58 A fourth. 41.04 g. *Rare.* F / VF £ 150
- 59 Sextans. 29.19 g. Lupa Romana r., two pellets. / Eagle r., two pellets / ROMA. *Cr.* 39/ 3.  
This is the cover coin. Good green-brown patina, good VF £1,000
- 60 Another. 25.56 g. VF £ 700
- 61 Uncia. 12.89 g. Sol bust facing, one pellet. / Crescent moon with two stars, one pellet / ROMA. *Cr.* 39/ 4.  
Fair / good F £ 40
- 62 Another. 12.21 g. Much pitted, VF £ 50
- 63 A third. 12.87 g. Fine style and good grey patina. VF £ 80
- 64 A fourth. 13.61 g. Nicely patinated, good F / VF £ 50
- 65 Semuncia. 6.26 g. Turreted goddess bust (Cybele ?) r. / Jockey riding r. / ROMA. *Cr.* 39/ 5. Pale green patina. VF £ 100
- 66 Another. 6.47 g. Green-brown, good VF £ 150
- 67 A third. 6.30 g. Well patinated, F / VF £ 50
- 68 A fourth. 5.72 g. VF / F £ 50



55



56



57



58



59



60



61



62



63



64



65



66



67



68





69



70



71



72



74



73



75



**Post-semilibral standard, Rome c. 215-212**

69	Trias, 16.32 g. Minerva head r. / Prow r. <i>Cr. 41/7b.</i>	Scratched. F / good F	£ 40
70	Another, 17.78 g.	Flawed flan. VF	£ 80
71	A third, 26.49 g.	Good F	£ 80
72	A fourth, 12.76 g. <i>Cr. 41/7b var.</i>	Reduced and overstruck. F/VF	£ 60
73	Quadrans, 14.89 g. Hercules head r. / Prow r. <i>Cr. 41/8b.</i>	F / VF	£ 80
74	Semuncia, 5.43 g. Mercury head r. / Prow r. <i>Cr. 41/11.</i>	F	£ 30
75	Another, 4.26 g.	Encrusted, good VF	£ 60



76



77



78



79



80



81



82



83



84

**Corn-ear series, Sicily c. 214-212.**

76	Quadrans, 12.86 g. Heracles head r. / Bull charging r. <i>Cr: 42/2.</i>	Pale brown tone, VF	£ 120
77	Another, 17.57 g.	Weakly struck, VF	£ 50
78	A third, 14.90 g.	Patinated, good F	£ 100
79	A fourth, 15.33 g.	About VF	£ 190
80	A fifth, 16.10 g.	F / VF	£ 70
81	Sextans, 11.54 g. Mercury head r. / Prow r. <i>Cr: 42/3.</i>	<i>Rare.</i> Fair / F	£ 200
82	Uncia, 5.63 g. Roma head r. / Prow r. <i>Cr: 42/4.</i>	Patinated, VF	£ 70
83	Another, 5.60 g.	Sage-green patina, VF	£ 70
84	A third, 6.15 g.	Good F	£ 40



86



85



87

**Luceria c. 214-212**

- 85 Uncia, 7.16 g. Roma head r. / Prow r. / L• Cr: 43/5. Neatly struck, good VF € 300
- 86 Semuncia, 4.30 g. Mercury bust r. / Prow r. / L Cr: 43/6. Good F € 80
- Stylistically, this could as well belong to the Luceria group Cr. 97 as here; perhaps there was continuous coinage at Luceria which has been in error divided by modern scholars.
- 87 Another, 3.00 g. VF € 100



88



89



90



91



92



**THE SEXTANTAL STANDARD COINAGE AND ITS REDUCTIONS**

**Anchor series, Rome c. 209-208**

- 88 As, 39.90 g. Janus head. / Prow r. Cr: 50/3. Good F € 100
- 89 Another, 35.90 g. Lovely black patina, VF € 150
- 90 A third, 30.74 g. Nearly VF € 120
- 91 Semis, 19.38 g. Saturn head r. / Prow r. Cr: 50/4. Encrusted, VF € 80
- 92 Tremis, 10.89 g. Minerva head r. / Prow r. Cr: 50/5. Rare, F € 80

**Anonymous sextantal series, Rome after 211.**

93	As, 48.45 g. Janus head. / Prow r., ROMA. <i>Cr.</i> 56/2.	Grey green patina, about F / VF	£ 60
94	Another, 50.58 g.	Green patina, good F	£ 70
95	A third, 33.60 g.	Green-brown patina, about VF	£ 90
96	A fourth, 45.55 g.	Green patina, good F	£ 80
97	A fifth, 42.18 g.	Green patina, Fair	£ 35
98	A sixth, 36.42 g.	Earthy patina, F	£ 40
99	A seventh, 37.87 g.	Dark green patina, about VF	£ 40
100	An eighth, 34.16 g.	Brown tone, F / good F	£ 30
101	Semis, 21.28 g. Saturn head r. / Prow r., S and ROMA. <i>Cr.</i> 56/3.	Brown tone, good F	£ 60
102	Another, 25.13 g.	Brown tone, F	£ 30
103	A third, 16.63 g.	Dark brown tone, F	£ 30
104	A fourth, 18.76 g.	Grey-green patina, good F	£ 50
105	A fifth, 18.69 g.	Light earthy green patina, nearly F	£ 20
106	A sixth, 18.23 g.	Creamy pale green patina, VF	£ 120
107	A seventh, 13.19 g.	Green-brown patina, F	£ 50
108	An eighth, 16.10 g.	Brown tone, F / VF	£ 40
109	A ninth, 21.93 g.	Encrusted green-brown patina, F	£ 30
110	A tenth, 15.81 g.	Green-brown patina, good VF	£ 180
111	An eleventh, 17.06 g.	Dark tone, good F / VF	£ 40
112	Triens, 17.37 g. Minerva head r. / Prow r., ROMA. <i>Cr.</i> 56/4.	Green-brown patina, Fair	£ 20
113	Another, 14.61 g.	Green-brown patina, F / good F	£ 30
114	A third, 14.34 g.	Pitted pale green patina, good F	£ 30
115	A fourth, 12.06 g.	Brown tone, Poor / F	£ 20
116	A fifth, 11.32 g.	Green-brown patina, F	£ 30
117	A sixth, 11.19 g.	Green patina, nearly F	£ 30
118	A seventh, 11.12 g.	Earthy green patina, nearly F	£ 30
119	An eighth, 9.57 g.	Porous patina, good F	£ 30
120	A ninth, 9.43 g.	Light green patina, F	£ 20
121	A tenth, 9.31 g.	Grey tone, F	£ 30
122	An eleventh, 8.31 g.	Brown tone, F	£ 20
123	A twelfth, 8.69 g.	Dark green patina, good F / VF	£ 40
124	A thirteenth, 5.78 g.	Dark green patina, good VF	£ 160
125	A fourteenth, 5.76 g.	Dark green patina, small flan and nearly VF	£ 40
126	A fifteenth, 6.27 g.	Dark brown tone, F / VF	£ 40
127	A sixteenth, 5.96 g.	Light green patina, F	£ 40
128	A seventeenth, 6.47 g.	Brown patina chipped on edge, VF	£ 40

129	Quadrans, 13.77 g. Hercules head r. / Prow r. ROMA. <i>Cr: 56/5.</i>	F	€ 40
130	Another, 12.40 g.	Light green patina. Fair	€ 20
131	A third, 9.91 g.	Creamy green patina. VF	€ 30
132	A fourth, 9.80 g.	Glossy dark green patina. good VF	€ 40
133	A fifth, 7.34 g.	Brown tone. F / VF	€ 30
134	A sixth of reduced weight, 3.38 g. <i>Cr: 56/5 var.</i>	Greenish-black patina. VF	€ 40
135	Sextans, 8.20 g. Mercury bust r. / Prow r. <i>Cr: 56/6.</i>	F	€ 30
136	Another, 6.63 g.	Pitted and encrusted. F	€ 20
137	A third, 5.29 g.	Good F	€ 20
138	A fourth, 5.12 g.	F / Fair	€ 20
139	A fifth, reduced, 4.09 g.	Fair	€ 20
140	A sixth, 5.40 g.	Good apple-green patina. VF	€ 40
141	Uncia, 4.91 g. Roma head r. / Prow r. <i>Cr: 56/7.</i>	Green patina. F	€ 20
142	Another, with variant small crest, 3.81 g. <i>Cr: 56/7 var.</i>	Patinated. F	€ 50
143	Semuncia, 2.37 g. Mercury head r. / Prow r. <i>Cr: 56/8.</i>	Mediocre/ VF	€ 10
144	Another, 2.19 g.	Fair/ VF	€ 30
145	A third, 3.68 g.	Dark green patina. about VF	€ 40
146	A fourth, 2.04 g.	Chipped patina. VF	€ 60
147	A fifth, 1.92 g.	VF / EF	€ 40



93



94



95



96



97



98



99



100



101



102



103



104



105



106



107



108



109



110







111



112



113



114



115



116



117



118



119



120



121



122



123



124



125



126



127



128





129



130



131



132



133



134



135



136



137



138



139



140



141



142



143



144



145



146



147





**Crescent series, Rome c. 207**

148	As. 39.82 g. Janus head. / Prow r. <i>Cr: 57/3.</i>	Good F	£ 60
149	Another. 36.39 g.	About F	£ 30
150	A third. 32.12 g.	Rusty. F	£ 40
151	Semis. 17.67 g. Saturn head r. / Prow r. <i>Cr: 57/4.</i>	Mediocre	£ 20



**Cornucopiae series, Rome c. 207**

152	As. 42.89 g. Janus head. / Prow r. <i>Cr: 58/3.</i>	F	£ 100
-----	---	---	-------

**Apex and hammer series, Central Italy(?) c. 211-208,**

153	As. 40.05 g. Janus head. / Prow r. <i>Cr: 59/2.</i>	Fair	£ 40
154	Another. 46.43 g.	Fair	£ 40
155	Semis. light series. 6.34 g. Saturn head r. / Prow r. <i>Cr: 59/3.</i>	Grey patina. F	£ 40
156	Another. heavy series. 24.12 g. <i>Cr: 59/3.</i>	Green patina. Fair	£ 20



157



158



159

**Caduceus series, Central Italy c. 211-208**

- |     |   |  |       |
|-----|---|--|-------|
| 157 | As, 51.52 g. Janus head. / Prow. <i>Cr: 60/2.</i>           | <i>Rare.</i> F / Fair                      | € 250 |
| 158 | Semis, 28.11 g. Saturn head r. / Prow r. <i>Cr: 60/3.</i>   | <i>Very rare.</i> VF                       | € 600 |
| 159 | Sextans, 6.24 g. Mercury bust r. / Prow r. <i>Cr: 60/6.</i> | Fine but encrusted green patina, nearly EF | € 70  |



160



161



162



164

165

166



163



168



169



170



167



**Victory series, Central Italy c. 211-208.**

160	As, 50.60 g. Janus head, / Prow r. <i>Cr: 61/2.</i>	Practically VF	€ 120
161	Another, heavy, 51.06 g.	Grey patina, Fair	€ 40
162	Semis, 22.35 g. <i>Cr: 61/3.</i>	Nicely patinated, VF	€ 70
163	Another, 6.55 g.	Smoothed green patina, good F	€ 50
164	Triens, 7.83 g. Minerva head r. / Prow r. <i>Cr: 61/4.</i>	Patinated, F	€ 20
165	Another, 9.54 g.	Black patina, good F	€ 30
166	A third, 7.70 g.	F	€ 20
167	Quadrans, 8.52 g. Hercules head r. / Prow r.	Pitted metallic surface, F	€ 20
168	Sextans, 3.27 g. Mercury head r. / Prow r. <i>Cr: 61/6.</i>	Cleaned, F	€ 20
169	Another, 4.45 g.	Greyish-black patina, VF	€ 40
170	A third, 5.27 g.	Fair	€ 15



171



172



**C series, Sardinia c. 211**

171	Quadrans, 5.70 g. Hercules head r. / Prow r. <i>Cr: 63/5.</i>	F	€ 50
172	Sextans, 3.72 g. Mercury bust r. / Prow r. <i>Cr: 63/6.</i>	Fair	€ 20



173



174



175



176



**MA series, Sardinia c. 210**

173	Quadrans, 5.09 g. Hercules head r. / Prow r. <i>Cr: 64/5.</i>	Rare. Green patina, F / VF	€ 100
174	Sextans, 4.15 g. Mercury bust r. / Prow r. <i>Cr: 64/6a.</i>	Greyish-green patina, a mis-struck VF	€ 40
175	Another, 3.24 g.	Overstruck on coin with star (obverse), good green patina, VF	€ 60
176	A third, 3.03 g.	F	€ 20



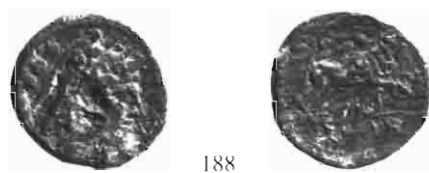
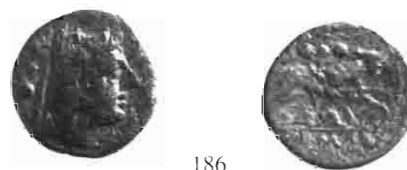
**AVR series, Sardinia c. 209**

- 177 As, 38.49 g. Janus head. / Prow r. *Cr: 65/2*. Green patina. Mediocre € 20  
 178 Sextans, 4.28 g. Mercury bust r. / Prow r. *Cr: 65/6*. A superb piece with a beautiful dark sea-green patina. EF € 300



**Corn-ear and KA series, Sicily c. 211-208**

- 179 Triens, 11.29 g. Minerva head r. / Prow r. *Cr: 69/4b*. F € 40  
 180 Sextans, 4.39 g. Mercury head r. / Prow r. *Cr: 69/6a*. Black patina, nearly VF € 40  
 181 Another, 5.97 g. F € 20  
 182 A third, 5.73 g. Fair/F € 15





189



190

**Corn-ear series, Sicily c. 211-210**

183	Triens. 12.01 g. Minerva bust r. / Prow r. <i>Cr.</i> 72/6.	<i>Extremely rare.</i> Greenish-black patina. VF	€ 750
184	A contemporary imitation of the above. 11.13 g.	Fair/F	€ 50
185	Quadrans. 10.39 g. Hercules head r. / Bull charging r. <i>Cr.</i> 72/7.	Good F	€ 50
186	Another, very much reduced. 5.50 g.	<i>Rare.</i> F	€ 90
187	A third. 12.40 g., with strong affinities to <i>Cr.</i> 42/2.	F	€ 40
188	A fourth, reduced. 6.30 g.	Fair.	€ 10
189	A fifth, 6.48 g.	F / good F	€ 30
190	As. 38.98 g. Janus head. / Prow r. <i>Cr.</i> 72/11.	Some rust, practically VF	€ 100



191



**Branch series, Sicily c. 209-208**

191	As. 50.90 g. Janus head. / Prow r. <i>Cr.</i> 76/2.	<i>Rare.</i> Good F	€ 250
-----	---	---------------------	-------



192



193



**Dolphin series, Sicily c. 209-208**

192	As. 39.42 g. Janus head. / Prow r. <i>Cr.</i> 80/2.	<i>Rare.</i> Dark patina, good F	€ 100
193	Another. 41.50 g.	<i>Rare.</i> Mediocre	€ 80



**ROMA monogram series, S. E. Italy c. 211-210**

- |     |   |                                |      |
|-----|---|--------------------------------|------|
| 194 | Semis, 20.61 g. Saturn head r. / Prow r. <i>Cr: 84/5.</i>     | Smoothed green patina, good F  | € 50 |
| 195 | Quadrans, 9.55 g. Hercules head r. / Prow r. <i>Cr: 84/6.</i> | Earthy green patina, nearly VF | € 80 |



**H series, S. E. Italy c. 211-210**

- |     |   |                                    |       |
|-----|---|------------------------------------|-------|
| 196 | Semis, 20.00 g. Saturn head r. / Prow r. <i>Cr: 85/3.</i>   | F                                  | € 40  |
| 197 | Triens, 10.63 g. Minerva head r. / Prow r. <i>Cr: 85/4.</i> | Fair/F                             | € 40  |
| 198 | Another, 10.62 g.   | Metallic appearance, VF            | € 50  |
| 199 | A third, 10.92 g.   | F                                  | € 20  |
| 200 | Sextans, 7.83 g. Mercury head r. / Prow r. <i>Cr: 85/6.</i> | <i>Rare.</i> Patinated, F / good F | € 100 |



**Q series, S. E. Italy c. 211-210**

- |     |   |                     |       |
|-----|---|---------------------|-------|
| 201 | Triens, 9.13 g. Minerva head r. / Prow r. <i>Cr: 86/2.</i>  | <i>Rare.</i> F / VF | € 100 |
| 202 | Quadrans, 7.81 g. Hercules head r. Prow r. <i>Cr: 86/3.</i> | <i>Rare.</i> Fair   | € 90  |
| 203 | Sextans, 5.76 g. Mercury head r. / Prow r. <i>Cr: 86/4.</i> | Cleaned, F / good F | € 40  |





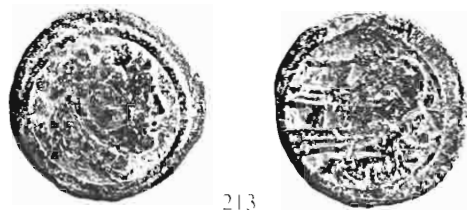
**V series, Central Italy c. 211-210**

- |     |   |                 |      |
|-----|---|-----------------|------|
| 204 | Semis, 15.79 g. Saturn head r. / Prow r. <i>Cr.</i> 87/2.   | Fair / Mediocre | € 30 |
| 205 | Triens, 11.12 g. Minerva head r. / Prow r. <i>Cr.</i> 87/3. | Good F / F      | € 40 |
| 206 | Another, 11.69 g.   | Fair            | € 20 |
| 207 | Sextans, 6.18 g. Mercury head r. / Prow r. <i>Cr.</i> 87/5. | Good F          | € 40 |



**Spearhead series, S. E. Italy c. 209**

- |     |  |  |       |
|-----|--|--|-------|
| 208 | As, 25.59 g. Janus head. / Prow r. <i>Cr.</i> 88/3a.   | <i>Extremely rare.</i> Black patina, F                       | € 450 |
| 209 | Semis, 11.34 g. Saturn head r. / Prow r. <i>Cr.</i> 88/4.  | A lovely coin with an apple-green patina, nearly EF          | € 200 |
| 210 | Quadrans, 4.28 g. Hercules head r. / Prow r. <i>Cr.</i> 88/6 and cf. 106 for this obverse style. | VF   | € 80  |
| 211 | Uncia, 3.58 g. Roma head r. / Prow r. <i>Cr.</i> 88/8.   | <i>Extremely rare.</i> Dark patina, and almost as struck, VF | € 150 |



**Club series, S.E. Italy c. 208**

- |     |  |                                      |       |
|-----|--|--------------------------------------|-------|
| 212 | As, 49.37 g. Janus head. / Prow r. <i>Cr.</i> 89/3.            | Attractive light green patina, F-VF  | € 150 |
| 213 | Quadrans, 13.57 g. Hercules head r. / Prow r. <i>Cr.</i> 89/6. | <i>Extremely rare,</i> but only Fair | € 160 |



214



215



216



217



218



221



219



222



220



223



226



224



225





227



228



229



**Luceria, 211-208.**

- 214 Sextans, 11.64 g. Mercury bust r. / Prow r. •L•. *Cr: 97/6b*. (?; Crawford's arrangement is problematic).  
Brown tone, VF / Good F € 120
- 215 Uncia, 4.00 g. Roma head r. / Prow r. / L•. *Cr: 97/7b*. F € 50
- 216 Another, 5.53 g. Pitted, VF € 20
- 217 Quadrans, 8.14 g. Hercules head r. / Prow r. / L. *Cr: 97/13a*. Rare, F € 120
- 218 Quadrans, 11.48 g. Mercury head r. / Prow r. *Cr: 97/13d*.  
*Very rare*. Good, but scratched, green patina. About VF € 90
- 219 Dextans, 22.19 g. Ceres or Proserpina head r. / Victory driving quadriga r. / L / ROMA / S••••. *Cr: 97/16*.  
*Very rare*. F € 600
- 220 Semis, 19.07 g. Saturn head r. L below. / Prow r. *Cr: 97/17*. Rare, Good F € 350
- 221 Sextans, 6.37 g. Mercury bust r. / Prow r. / •L•. *Cr: 97/20b*. *Very rare*, VF € 180
- 222 Another, 5.99 g. *Very rare*, F € 120
- 223 As, 22.69 g. Laureate Janus head, – above, I, below. / Prow r. and I. *Cr: 97/22a*. Fine glossy patina, EF € 700
- 224 Another, 20.19 g. Brown tone, VF € 250
- 225 Dextans, 15.78 g. Ceres or Proserpina head r. / Victory driving biga r. *Cr: 97/23*. *Extremely rare* and about VF € 600
- 226 Semis, 12.58 g. Saturn head r. / Prow r. / L. *Cr: 97/24*. Rather encrusted green patina, good VF € 150
- 227 Triens, 9.18 g. Bejewelled Minerva head r. / Prow r. / L. *Cr: 97/25*. Rare. A wonderful example, as struck, EF € 800
- 228 Quadrans, 6.70 g. Hercules head r., Γ below. / Prow r. *Cr: 97/26*. *Extremely rare, perhaps unique* VF € 1,200
- 229 Another, 6.25 g., club at truncation. *Cr: 97/26 var*. Scratched on reverse, VF € 250



230



**LT series, Luceria c. 211-210**

- 230 Sextans, 8.23 g. Minerva head r. / L / Dioscuri riding r. / T. *Cr: 98A/6*. *Very rare*, VF € 600



231

**P series, Luceria c. 209-208 and later**

- 231 Dextans, 19.01 g. Ceres or Proserpina head r. / Victory driving biga r. *Cr. 99/2a*.  
*Very rare. Brown tone, double-struck and F* € 350



232



233

**CA series, Canusium c. 209-208**

- 232 Triens, 7.58 g. Minerva head r. / Prow r. *Cr. 100/3*. F € 50  
 233 Another, 6.28 g. Mis-struck, good F € 100



234



235

**Staff and club series, Etruria (?) c. 208**

- 234 Sextans, 11.59 g. Mercury head r. / Prow r. *Cr. 106/7a-b*. Good F / VF € 50  
 235 Uncia, 3.53 g. Roma head r. / Prow r. *Cr. 106/9*. Good VF € 100



236



237

**Wreath series, uncertain mint c. 211-208**

- 236 As, heavy series, 42.96 g. Janus head. / Prow r. *Cr. 110/2*. Good green patina, good F € 80  
 237 Another, light series, 11.93 g. F / VF € 40



238



239



240



**Staff series, Rome c. 206-195**

- |     |   |                           |      |
|-----|---|---------------------------|------|
| 238 | As, 40.96 g. Janus head. / Prow r. <i>Cr.</i> 112/3.                    | <i>Rare.</i> Mediocre     | € 70 |
| 239 | Triens, 17.36 g. Minerva head r. / Prow r. <i>Cr.</i> 112/5 <i>b.</i>   | <i>Rare.</i> F            | £ 80 |
| 240 | Quadrans, 5.03 g. Hercules head r. / Prow r. <i>Cr.</i> 112/6 <i>a.</i> | Pitted brown tone, F / VF | £ 40 |



241



242



243



244



**Star series, Rome c. 206-195**

- |     |  |                        |       |
|-----|--|------------------------|-------|
| 241 | As, 26.61 g. Janus head. / Prow r. <i>Cr.</i> 113/2.                               | <i>Very rare.</i> Fair | € 100 |
| 242 | Another, 33.45 g.  | Good F                 | £ 80  |
| 243 | Similar to previous, but seven pointed star. 21.71 g. <i>Cr.</i> 113/2 <i>var.</i> | F                      | £ 120 |
| 244 | Quadrans, 6.45 g. Hercules head r. / Prow r. <i>Cr.</i> 113/5.                     | <i>Rare.</i> F         | £ 70  |



245



247



246



**Rostrum tridens series, Rome c. 206-195**

- |     |   |                    |       |
|-----|---|--------------------|-------|
| 245 | As, 39.14 g. Janus head. / Prow r. <i>Cr: 114/2.</i>                              | Handsome style, VF | € 120 |
| 246 | Another, 28.77 g.   | Fair               | € 40  |
| 247 | Semis, 13.63 g. Saturn head r. / Prow r. <i>Cr: 114/3, attribution uncertain.</i> | Fair               | € 40  |



248



249



**Bird and rudder series, Rome c. 206-195**

- |     |   |             |      |
|-----|---|-------------|------|
| 248 | As, 42.26 g. Janus head. / Prow r. <i>Cr: 117B/1.</i> | Good F      | € 80 |
| 249 | Another, 35.76 g.                                     | Good F / VF | € 70 |
- The bird is Venus' dove.



250



251



**Helmet series, Rome c. 206-195.**

- |     |  |         |      |
|-----|--|---------|------|
| 250 | As, 28.07 g. Janus head. / Prow r. <i>Cr: 118/1.</i>       | Fair    | € 20 |
| 251 | Semis, 11.75 g. Saturn head r. / Prow r. <i>Cr: 118/2.</i> | Fair/ F | € 40 |

**Knife series, Rome c. 206-195**



- 252 As, 58.15 g. Janus head. / Prow r. *Cr.* 120/3.  
 253 Triens, 12.54 g. Minerva head r. / Prow r. *Cr.* 120/5.  
 254 Quadrans, 7.62 g. Hercules bust r. / Prow r. *Cr.* 120/6.

Mediocre £ 20  
 F £ 20  
*Rare.* Black patina, VF £ 80



**Sow series, Rome c. 206-195**

- 255 As, 40.09 g. Janus head. / Prow r. *Cr.* 121/3.  
 256 Triens, 10.47 g. Minerva head r. / Prow r. *Cr.* 121/5.

*Rare.* Encrusted green patina, good F £ 110  
 Fair/ good F £ 30



**Dog series, Rome c. 206-195**

- 257 As, 36.49 g. Janus head. / Prow r. *Cr.* 122/3.  
 258 Triens, 13.18 g. Minerva head r. / Prow r. *Cr.* 122/5.  
 259 Quadrans, 7.06 g. Hercules head r. / Prow r. *Cr.* 122/6.

Fair/ good F £ 40  
*Rare.* Good F £ 100  
*Rare.* About VF £ 100



260



261



262



**Meta series, Rome c. 206-195**

- 260 As, 31.59 g. Janus head. / Prow r. *Cr: 124/3.*
- 261 Another, 40.40 g.
- 262 Quadrans, 10.47 g. *Cr: 124/6.*

F € 30  
 About VF € 100  
 Fair € 30



263



264



265



266



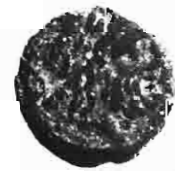
**ME series, Rome c. 194-190**

- 263 As, 36.19 g. Janus head. / Prow r. *Cr: 132/3.*
- 264 Semis, 15.48 g. Saturn head r. / Prow r. *Cr: 132/4.*
- 265 Triens, 11.36 g. Minerva head r. / Prow r. *Cr: 132/5.*
- 266 Quadrans, 3.94 g. Hercules bust r. / Prow r. *Cr: 132/6.*

Good F € 40  
 Rare. Good F € 70  
 F € 20  
 Fair € 20



267



268



269



**TAMP series, Rome c. 194-190**

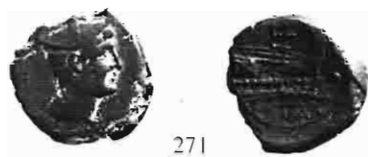
- 267 As, 31.45 g. Janus head. / Prow r. *Cr: 133/4.*
- 268 Semis, 7.69 g. Saturn head r. / Prow r. *Cr: 133/5.*
- 269 Quadrans, 11.42 g. Hercules bust r. / Prow r. *Cr: 133/7.*

Nearly VF € 80  
 Rare. Brown tone, nearly F € 70  
 Rare. Green patina, F € 70





270



271

**L.P.L.H series, Rome c.194-190**

- |     |  |        |      |
|-----|--|--------|------|
| 270 | As, 40.49 g. Janus head. / Prow r. <i>Cr. 134/2.</i>                           | Good F | £ 60 |
| 271 | Sextans, 4.43 g. Mercury bust r. / Prow r. <i>Cr. 134/6 var. (no caduceus)</i> | Good F | £ 50 |



272

**AN series, Rome c. 194-190**

- |     |  |                               |       |
|-----|--|-------------------------------|-------|
| 272 | As, 36.85 g. Janus head. / Prow r. <i>Cr. 136/2.</i> | <i>Extremely rare.</i> Good F | £ 600 |
|-----|--|-------------------------------|-------|



273



274



275

**Bird and TOD series, Rome c. 189-180**

- |     |  |                               |       |
|-----|--|-------------------------------|-------|
| 273 | As, 31.71 g. Janus head. / Prow r. <i>Cr. 141/2a.</i>                                | Some weakness. VF             | £ 50  |
| 274 | Another, 29.99 g. variant with wreath before bird. <i>Cr. 141/2a. (misdescribed)</i> | VF                            | £ 200 |
| 275 | Another, 23.81 g., variant with bird on T-perch before prow. <i>Cr. 141/2b.</i>      | <i>Extremely rare.</i> Good F | £ 500 |



**Bull and MD series, Rome c. 189-180**

- |     |  |           |      |
|-----|--|-----------|------|
| 276 | As, 33.92 g. Janus head. / Prow r. <i>Cr: 142/1.</i>         | Fair - F  | £ 30 |
| 277 | Another, 48.00 g.  | Nearly VF | £ 50 |
| 278 | A third, 30.30 g.  | Good F    | £ 50 |
| 279 | Sextans, 6.23 g. Mercury bust r. / Prow r. <i>Cr: 142/5.</i> | Nearly VF | £ 40 |



**Round shield and MAE series, Rome c. 189-180**

- |     |  |        |      |
|-----|--|--------|------|
| 280 | As, 32.57 g. Janus head. / Prow r. <i>Cr: 143/1.</i> | Good F | £ 40 |
| 281 | Another, 26.50 g.                                    | Fair   | £ 20 |



**Victory and LFP series, Rome c. 189-180**

- |     |   |   |       |
|-----|---|---|-------|
| 282 | As, 33.53 g. Janus head. / Prow r. <i>Cr: 144/1.</i>    | Nearly VF                                   | £ 60  |
| 283 | Another, 35.28 g.                                       | Nearly VF                                   | £ 50  |
| 284 | Uncia, 5.49 g. Roma head r. / Prow r. <i>Cr: 144/6.</i> | <i>Extremely rare.</i> Green patina, good F | £ 350 |



285



286



287



**Victory and spearhead series, Rome c. 189-180**

- |     |  |   |       |
|-----|--|---|-------|
| 285 | As, 29.12 g. Janus head. / Prow r. <i>Cr. 145/1.</i>           | Fine dark green patina, good F            | € 40  |
| 286 | Triens, 7.12 g. Minerva head r. / Prow r. <i>Cr. 145/3.</i>    | <i>Rare.</i> Good F                       | € 100 |
| 287 | Quadrans, 6.96 g. Hercules bust r. / Prow r. <i>Cr. 145/4.</i> | <i>Rare.</i> Nice creamy green patina, VF | € 80  |



288



289



290



291



**Q. MARI series, Rome c. 189-180**

- |     |  |                      |       |
|-----|--|----------------------|-------|
| 288 | As, 32.46 g. Janus head. / Prow r. <i>Cr. 148/1.</i>           | Good dark patina, VF | € 100 |
| 289 | Semis, 17.32 g. Saturn head r. / Prow r. <i>Cr. 148/2.</i>     | Black patina, F      | € 20  |
| 290 | Triens, 13.68 g. Minerva head r. / Prow r. <i>Cr. 148/3.</i>   | <i>Very rare.</i> F  | € 150 |
| 291 | Quadrans, 6.38 g. Hercules bust r. / Prow r. <i>Cr. 148/4.</i> | <i>Rare.</i> F       | € 70  |



292

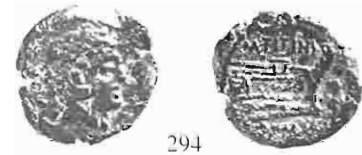


**L. MAMILI series, Rome c. 189-180**

- |     |   |                                     |       |
|-----|---|-------------------------------------|-------|
| 292 | As, 29.59 g. Janus head. / Prow r. on which. Ulysses leaning on staff. <i>Cr. 149/1a.</i> | <i>Rare.</i> Most elegant style, VF | € 450 |
|-----|---|-------------------------------------|-------|



293



294

**M. TITINI series, Rome c. 189-180**

293 As, 25.88 g. Janus head. / Prow r. *Cr: 150/1.*

Fair € 30

294 Quadrans, 5.98 g. Hercules bust r. / Prow r. *Cr:150/4.*

Eroded surface. VF € 30



296

295



297

**Fly series, Rome c. 179-170**

295 As, 40.57 g. Janus head. / Prow r. *Cr: 159/3.*

*Very rare.* Eroded, good F € 120

296 Semis, 11.92 g. Saturn head r. / Prow r. *Cr: 159/4.*

Mediocre € 20

297 Quadrans, 6.87 g. Hercules bust r. / Prow r. *Cr: 159/6.*

Fair € 30



298



**Dolphin series, Rome c. 179-170**

298 As, 28..06 g. Janus head. / Prow r. *Cr: 160/1.*

Fair / F € 30



299

300

301

**TAL series, Rome c. 179-170**

299 As, 25.22 g. Janus head. / Prow r. *Cr: 161/2*

VF € 100

300 Another, 52.86 g. Attribution uncertain.

Mediocre € 20

301 Semis, 15.81 g. Saturn head r. / Prow r. *Cr: 161/3.*

*Extremely Rare.* Poor / Fair € 90



**MAT series, Rome c. 179-170**

- |     |  |        |       |
|-----|--|--------|-------|
| 302 | As. 45.30 g. Janus head. / Prow r. <i>Cr. 162/3.</i> | Good F | € 80  |
| 303 | Another. 31.09 g.                                    | VF     | € 100 |



**C. SAX series, Rome c. 169-158**

- |     |  |                    |      |
|-----|--|--------------------|------|
| 304 | As. 24.96 g. Janus head. / Prow r. <i>Cr. 173/1.</i>           | Eroded, good F / F | € 30 |
| 305 | Another. 28.65 g.  | Fair / F           | € 30 |
| 306 | Semis. 10.09 g. Saturn head r. / Prow r. <i>Cr. 173/2.</i>     | Earthy, good F     | € 40 |
| 307 | Quadrans. 5.87 g. Hercules bust r. / Prow r. <i>Cr. 173/4.</i> | F                  | € 20 |



**A. CAE series, Rome c. 169-158**

- |     |   |        |      |
|-----|---|--------|------|
| 308 | As. 40.93 g. Janus head. / Prow r. <i>Cr. 174/1.</i>        | Good F | € 50 |
| 309 | Another. 26.23 g.   | VF     | € 80 |
| 310 | Triens. 9.42 g. Minerva head r. / Prow r. <i>Cr. 174/3.</i> | F      | € 40 |



311

**PAE series, Rome c. 169-158**

311 As, 34.40 g. Janus head. / Prow r. *Cr: 176/1.*

Good F £ 80



312



313

**PT series, Rome c. 169-158**

312 As, 29.00 g. Janus head. / Prow r. *Cr: 177/1.*

Fair/F £ 20

313 Semis, 11.82 g. Saturn head r. / Prow r. *Cr: 177/2.*

F / Good F £ 40



314



315



316

**CINA series, Rome c. 169-158**

314 As, 22.88 g. Janus head. / Prow r. *Cr: 178/1.*

Green patina, F £ 30

315 Another, 37.73 g.

VF £ 70

316 Quadrans, 4.34 g. Hercules bust r. / Prow r. *Cr: 178/4.*

Green patina, F £ 20



317



320



318



319



**BAL series, Rome c. 169-158**

317	As, 40.48 g. Janus head. / Prow r. <i>Cr. 179/1.</i>	Off-centre, F	£ 30
318	Another, 33.01 g.	Fair	£ 20
319	Quadrans, 8.77 g. Hercules bust r. / Prow r. <i>Cr. 179/4.</i>	F	£ 20
320	Uncia, 5.62 g. Roma head r. / Prow r. <i>Cr. —. (now 179/6). Unpublished.</i>	F	£ 500



321



322



323



324



**SAX series, Rome c. 169-158**

321	As, 24.62 g. Janus head. / Prow r. <i>Cr. 180/1.</i>	Lovely dark green patina, but off-centre, F	£ 50
322	Another, 36.41 g.	Mouldy patina, F / good F	£ 25
323	Tremis, 8.86 g. Minerva head r. / Prow r. <i>Cr. 180/3.</i>	Green patina, F	£ 20
324	Quadrans, 8.59 g. Hercules bust r. / Prow r. <i>Cr. 180/4.</i>	Good green patina, good F	£ 20



325



**Caps of the Dioscuri series, Rome c. 169-158**

325 As, 20.46 g. Janus head. / Prow r. *Cr. 181/1.*

Fair € 30



326



327



328



**Griffin and hare's head series, Rome c. 169-158**

326 As, 33.09 g. Janus head. / Prow r. *Cr. 182/2.*

Fair € 20

327 Another, 26.37 g.

Off-centre, VF € 40

328 Triens, 15.19 g. Minerva head r. / Prow r. *Cr. 182/4.*

Fair € 20



329



**Wolf and twins series, Rome c. 169-158**

329 As, 27.57 g. Janus head. / Prow r. *Cr. 183/1.*

An excellent specimen, VF € 80





**Butterfly and grapes series, Rome c. 169-158**

- |     |  |                             |       |
|-----|--|-----------------------------|-------|
| 330 | As, 29.81 g. Janus head. / Prow r. <i>Cr: 184/1a.</i>          | Fine black patina, about VF | £ 75  |
| 331 | Another, 35.65 g.  | VF                          | £ 120 |
| 332 | Quadrans, 4.75 g. Hercules bust r. / Prow r. <i>Cr: 184/4.</i> | Fair                        | £ 10  |



**VARO series, Rome c. 169-158**

- |     |  |                                    |      |
|-----|--|------------------------------------|------|
| 333 | As, 34.34 g. Janus head. / Prow r. <i>Cr: 185/1.</i> | VF                                 | £ 40 |
| 334 | Another, 28.14 g.                                    | Well struck and centred, VF        | £ 70 |
| 335 | A third, 29.60 g.                                    | Nicely patinated and as struck, VF | £ 60 |

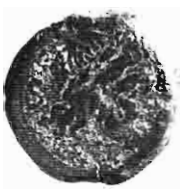


**MVRENA series, Rome c. 169-158**

- |     |  |           |      |
|-----|--|-----------|------|
| 336 | As, 30.81 g. Janus head. / Prow r. <i>Cr: 186/1.</i> | VF        | £ 70 |
| 337 | Another, 34.72 g.                                    | Nearly VF | £ 60 |



338



340



338



339



**PVR series, Rome c. 169-158**

338 As, 29.43 g. Janus head. / Prow r. *Cr.* 187/2.

Nearly F £ 20

339 Semis, 16.62 g. Saturn head r. / Prow r. *Cr.* 187/3.

*Extremely rare.* Glossy apple-green patina, F £ 350

340 Another, 14.23 g.

*Extremely rare.* Mediocre/ F £ 150



341



342



**OPEIMI series, Rome c. 169-158**

341 As, 31.89 g. Janus head. / Prow r. *Cr.* 188/1.

VF £ 60

342 Quadrans, 3.73 g. Hercules head r. / Prow r. *Cr.* 188/4 (?), *an uncertain attribution.*

F / VF £ 60

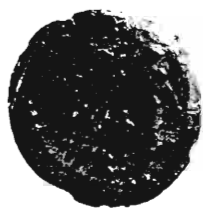


343



344





345



346



**P. BLAS series, Rome c. 169-158**

- |     |   |                            |      |
|-----|---|----------------------------|------|
| 343 | As, 22.70 g. Janus head. / Prow r. <i>Cr. 189/ 1.</i>       | As struck, VF              | £ 40 |
| 344 | Another, 42.53 g.   | Good F                     | £ 40 |
| 345 | Semis, 14.66 g. Saturn head r. / Prow r. <i>Cr. 189/ 2.</i> | Olive-green patina, good F | £ 40 |
| 346 | Another, 16.57 g.   | Good F                     | £ 20 |



347



348



349



350



**OPEI series, Rome c. 169-158**

- |     |   |                      |      |
|-----|---|----------------------|------|
| 347 | As, 29.79 g. Janus head. / Prow r. <i>Cr. 190/ 1.</i>           | About as struck, VF  | £ 80 |
| 348 | Another, 33.23 g.   | Fine patina, good VF | £ 70 |
| 349 | Triens, 9.46 g. Minerva head r. / Prow r. <i>Cr. 190/ 3.</i>    | Rare, Fair / F       | £ 90 |
| 350 | Quadrans, 6.20 g. Hercules bust r. / Prow r. <i>Cr. 190/ 4.</i> | Rare, Fair           | £ 80 |



351



352





353



354

**VAl series, Rome c. 169-158**

- |     |   |                               |      |
|-----|---|-------------------------------|------|
| 351 | As, 31.60 g. Janus head. / Prow r. <i>Cr: 191/1</i> .       | F                             | € 20 |
| 352 | Another, 23.81 g.   | Lovely olive-green patina, EF | € 70 |
| 353 | A third, 22.67 g.   | Fair                          | € 20 |
| 354 | Semis, 10.35 g. Saturn head r. / Prow r. <i>Cr: 191/2</i> . | Metallic tone, F              | € 20 |



355



356

**AT series, Rome c. 169-158**

- |     |   |           |      |
|-----|---|-----------|------|
| 355 | As, 23.32 g. Janus head. / Prow r. <i>Cr: 192/1</i> . | Fair      | € 20 |
| 356 | Another, 33.88 g.                                     | Nearly VF | € 50 |



357



358



359



361



360

**TVRD series, Rome c. 169-158**

- |     |  |                               |       |
|-----|--|-------------------------------|-------|
| 357 | As, 22.70 g. Janus head. / Prow r. <i>Cr: 193/1</i> .        | Nice mid-green patina, good F | € 40  |
| 358 | Another, 26.74 g.  | Agreeably patinated, about EF | € 120 |
| 359 | Semis, 11.15 g. Saturn head r. / Prow r. <i>Cr: 193/2</i> .  | Good F                        | € 30  |
| 360 | Another, 10.77 g.  | Fair                          | € 20  |
| 361 | Tremis, 6.21 g. Minerva head r. / Prow r. <i>Cr: 193/3</i> . | Fair                          | € 10  |



**Anchor series, Rome c. 169-158**

362	As, 20.94 g. Janus head. / Prow r. <i>Cr. 194/1.</i>	As struck, EF	£ 200
363	Another, 29.15 g.	Green-brown patina, nearly VF	£ 60
364	A third, 15.36 g.	Light brown tone, scraped, good F	£ 30
365	Semis, 17.11 g. Saturn head r. / Prow r. <i>Cr. 194/2.</i>	<i>Rare.</i> Green patina, F	£ 80
366	Quadrans, 7.18 g. Hercules bust r. / Prow r. <i>Cr. 194/4 (but cf. also 50/6).</i>	<i>Rare.</i> Creamy green patina, but off-centre, VF	£ 80



**Ass series, Rome c. 169-158**

367	As, 22.54 g. Janus head. / Prow r. <i>Cr. 195/1.</i>	Poor / Fair	£ 20
368	Another, light standard, 14.76 g.	F	£ 30
369	A third, 17.73 g.	Good F	£ 40
370	Semis, 16.04 g. Saturn head r. / Prow r. <i>Cr. 195/2.</i>	<i>Rare.</i> Fair	£ 70
371	Triens, 10.87 g. Minerva head r. / Prow r. <i>Cr. 195/3.</i>	Nearly F	£ 20
372	Sextans, 10.87 g. Mercury head r. / Prow r. <i>Cr. 195/5.</i>	Nearly F	£ 20



373



374



375



376



377



**Star series, Rome c. 169-158**

373	As, 18.09 g. Janus head. / Prow r. <i>Cr.</i> 196/1.	Granular green patina, good F	£ 50
374	Another, 14.40 g.	Irregular flan and striking, patinated, VF	£ 40
375	Semis, 12.04 g. Saturn head r. / Prow r. <i>Cr.</i> 196/2.	<i>Very rare.</i> Fair	£ 60
376	Quadrans, 3.69 g. Hercules bust r. / Prow r. <i>Cr.</i> 196/4.	Good pale green patina, VF	£ 50
377	Another, 2.84 g.	Earthy dark patina, as struck, EF	£ 120



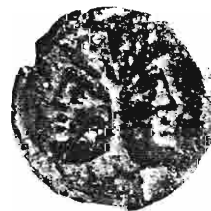
378



379



380



381



382



383





384



385



386



387



**Anonymous series, Rome c. 157-156**

378	As, 22.55 g. Janus head. / Prow r.; above, I. <i>Cr. 197-198B/1a.</i>	Green patina, good F	£ 40
379	Another, 33.30 g. Metal flaw at rim.	Olive-green patina, chipped flan, VF	£ 60
380	A third, 27.13 g.	Green patina, VF	£ 60
381	As, 14.04 g. Janus head. / Prow r.; to r., I. <i>Cr. 197-198B/1b.</i>	<i>Rare</i> and F	£ 100
382	Semis, 11.48 g. Saturn head r. / Prow r. <i>Cr. 197-198B/2</i>	Grey-brown tone, Fair/good F	£ 30
383	Another, 11.80 g.	Powdery green patina, good VF	£ 30
384	A third, 9.43 g.	Green-brown patina, encrusted VF	£ 30
385	Quadrans, 4.68 g. Hercules head r. / Prow r. <i>Cr. 197-198B/4.</i>	Good F	£ 20
386	Another, 3.37 g.	F / Fair	£ 20
387	A third, 3.26 g. <i>Cr. 197-198B/4 (?)</i> , an uncertain attribution.	VF	£ 30



388



389



390



391



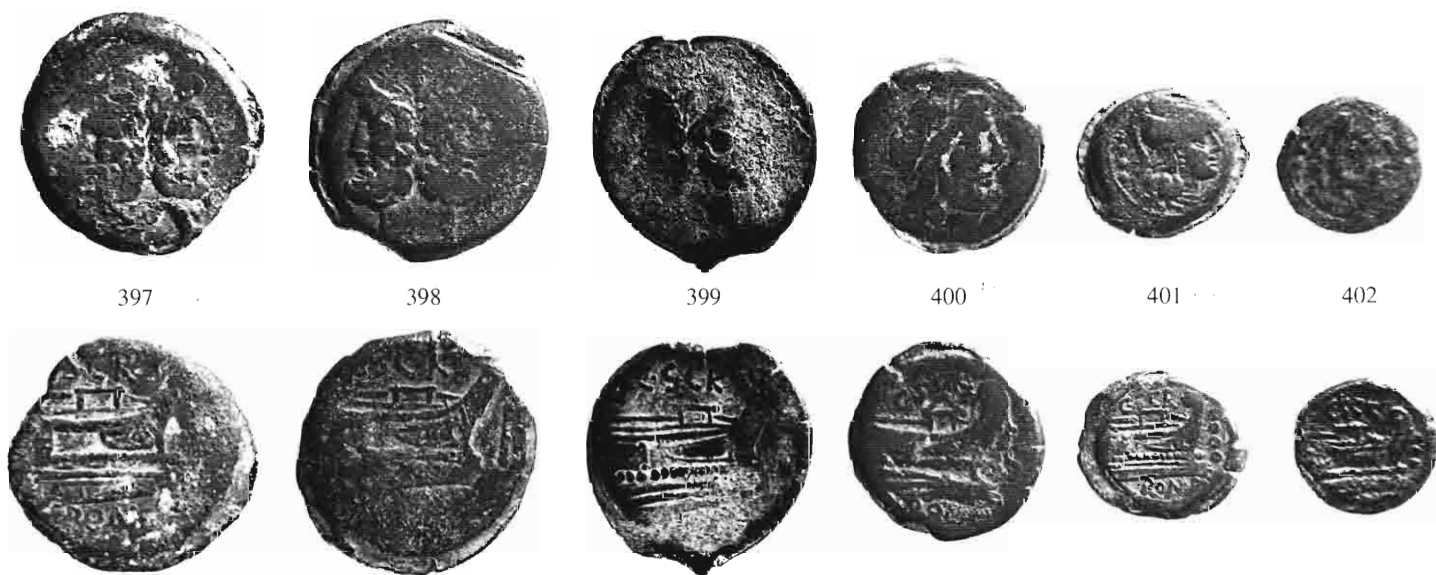
**SAR series, Rome c. 155**

388	As, 28.94 g. Janus head. / Prow r. <i>Cr. 199/2.</i>	Fair	£ 20
389	Another, 22.83 g.	Mediocre/ F	£ 20
390	Triens, 9.66 g. Minerva head r. / Prow r. <i>Cr. 199/4 var. (SAR for SAR).</i>	Suspiciously smoothed, F	£ 20
391	Quadrans, 10.85 g. Hercules head r. / Prow r. <i>Cr. 199/5 var.</i>	Off-centre, Fair/ F	£ 20



**NAT series, Rome c. 155**

392	As, 20.15 g. Janus head. / Prow r. <i>Cr. 200/2.</i>	Poorly struck, VF	£ 30
393	Another, 26.71 g.	Poor / Fair	£ 10
394	Triens, 8.62 g. Minerva head r. / Prow r. <i>Cr. 200/4.</i>	Good F	£ 20
395	Another, 9.16 g.	VF	£ 30
396	Quadrans, 5.70 g. Hercules head r. / Prow <i>Cr. 200/5.</i>	F	£ 10



**C. SCR series, Rome c. 154**

397	As, 21.62 g. Janus head. / Prow r. <i>Cr. 201/2.</i>	Mediocre / F	£ 20
398	Another, 28.07 g.	F	£ 30
399	A third, 14.57 g.	Mediocre / F	£ 20
400	Semis, 15.09 g. Saturn head r. / Prow r. <i>Cr. 201/3.</i>	Dark tone. Fair	£ 20
401	Triens, 10.76 g. Minerva head r. / Prow r. <i>Cr. 201/4.</i>	Good F	£ 30
402	Quadrans, 6.78 g. Hercules head r. / Prow r. <i>Cr. 201/5.</i>	Fair / F	£ 15





403



404



**C. MAIANI series, Rome c. 153**

403 As, 23.17 g. Janus head. / Prow r. Cr: 203/2.

About F £ 20

404 Semis, 3.79 g. Saturn head r. / Prow r. Cr: 203/3.

*Very rare.* Good green patina, nearly VF £ 80



405



406



407



408



409



**L. SAVF series, Rome c. 152**

405 As, 23.35 g. Janus head. / Prow r. Cr: 204/2.

Defective flan with straw tone, good F £ 25

406 Another, 13.29 g.

Green patina, F £ 40

407 A third, 23.59 g.

Good F £ 30

408 Semis, 6.91 g. Saturn head r. / Prow r. Cr: 204/3.

Good F £ 20

409 Another, 7.67 g.

Fair £ 10



410



411



412



413



**P. SVLA series, Rome c. 151**

410	As, 18.65 g. Janus head. / Prow r. <i>Cr. 205/2.</i>	F	£ 30
411	Another, 30.15 g.	Reddish-green patina, VF	£ 40
412	Semis, 14.02 g. Saturn head r. / Prow r. <i>Cr. 205/3.</i>	Fair	£ 20
413	Triens, 7.83 g. Minerva head r. / Prow r. <i>Cr. 205/4.</i>	Good F	£ 30



414



415



416



**SAFRA series, Rome c. 150**

414	As, 22.55 g. Janus head. / Prow r. <i>Cr. 206/2.</i>	F	£ 30
415	Another, 19.24 g.	Fair	£ 20
416	Semis, 11.00 g. Saturn head r. / Prow r. <i>Cr. 206/3.</i>	Obverse scratched, good F	£ 20



417



418



419



420



421



**C. IVNI C.F series, Rome c. 149**

417	As, 24.80 g. Janus head. / Prow r. <i>Cr. 210/2.</i>	Fair / F	£ 30
418	Another, 21.57 g.	Fair	£ 20
419	Semis, 13.65 g. Saturn head r. / Prow r. <i>Cr. 210/3.</i>	Dark green patina, VF	£ 100
420	Triens, 9.37 g. Minerva head r. / Prow r. <i>Cr. 210/4.</i>	Rare. Off-centre, F	£ 80
421	Quadrans, 6.09 g. Hercules head r. / Prow r. <i>Cr. 210/5.</i>	Rare. F	£ 80



**Mast and sail series, Rome c. 155-149**

- |     |  |                          |       |
|-----|--|--------------------------|-------|
| 422 | As, 19.53 g. Janus head. / Prow r. <i>Cr: 213/1.</i>         | Poor / Fair              | £ 20  |
| 423 | Another, 28.03 g.  | Fair / good F            | £ 30  |
| 424 | Sextans, 5.81 g. Mercury head r. / Prow r. <i>Cr: 213/4.</i> | <i>Very rare.</i> F / VF | £ 100 |



**M.ATILI (SARAN) series, Rome c. 148**

- |     |   |                     |      |
|-----|---|---------------------|------|
| 425 | As, 20.04 g. Janus head. / Prow r. <i>Cr: 214/2a.</i>       | Fair/ F             | £ 20 |
| 426 | Another, 26.71 g.   | Fair                | £ 20 |
| 427 | Semis, 14.00 g. Saturn head r. / Prow r. <i>Cr: 214/3a.</i> | <i>Rare.</i> Good F | £ 80 |





**Q. MARC. LIBO series, Rome c. 148**

428	As, 22.52 g. Janus head. / Prow r. <i>Cr. 215/2a.</i>	Fair	£ 20
429	Another, 21.42 g.	Fair	£ 20
430	Semis, 10.02 g. Saturn head r. / Prow r. <i>Cr. 215/3.</i>	Nearly VF	£ 30
431	Triens, 11.19 g. Minerva head r. / Prow r. <i>Cr. 215/4.</i>	F	£ 20
432	Quadrans, 5.52 g. Hercules head r. / Prow r. <i>Cr. 215/5.</i>	Fair /F	£ 20



**L. SEMPR PITIO series, Rome c. 148**

433	As, 23.15 g. Janus head. / Prow r. <i>Cr. 216/2a.</i>	Some weakness, patinated. VF	£ 25
434	Another, 27.58 g.	Fair	£ 10
435	Semis, 10.63 g. Saturn head r. / Prow r. <i>Cr. 216/3.</i>	Off-centre. Fair	£ 15





438



439

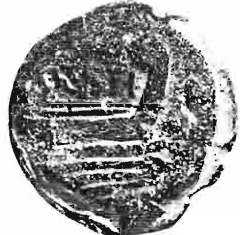


**C. TER IVC series, Rome c. 147**

- |     |  |                     |      |
|-----|--|---------------------|------|
| 436 | As, 18.20 g. Janus head. / Prow r. <i>Cr: 217/2.</i>           | Fair                | £ 20 |
| 437 | Another, 27.56 g.  | Scratched, about F  | £ 20 |
| 438 | Quadrans, 4.62 g. Hercules head r. / Prow r. <i>Cr: 217/5.</i> | Encrusted patina, F | £ 20 |
| 439 | Another, 5.29 g.   | F / VF              | £ 20 |



440



441



442



**C. ANTESTI series, Rome c. 146**

- |     |   |                 |      |
|-----|---|-----------------|------|
| 440 | As, 24.89 g. Janus head. / Prow r. <i>Cr: 219/2.</i>        | Fair            | £ 20 |
| 441 | Triens, 8.61 g. Minerva head r. / Prow r. <i>Cr: 219/4.</i> | VF              | £ 40 |
| 442 | Another, 7.66 g.  | Poor / Mediocre | £ 10 |



443



**C. TITINI series, Rome c. 141**

- |     |  |            |      |
|-----|--|------------|------|
| 443 | Semis, 18.31 g. Saturn head r. / Prow r. <i>Cr: 226/2.</i> | Good F / F | £ 30 |
|-----|--|------------|------|



444



445



**CN. GELI series, Rome c. 138**

- |     |  |             |      |
|-----|--|-------------|------|
| 444 | Triens, 6.51 g. Minerva head r. / Prow r. <i>Cr: 232/3.</i>    | Rare, F     | £ 80 |
| 445 | Quadrans, 3.18 g. Hercules head r. / Prow r. <i>Cr: 232/4.</i> | Good F / VF | £ 25 |



446

**L. ANTES GRAGV series, Rome c. 136**

446 Quadrans, 1.50 g. Hercules head r. / Prow r. *Cr: 238/3b-d.*

F £ 20



447

**C. SERVEILI M.F. series, Rome c. 136**

447 Quadrans, 3.67 g. Hercules bust r. / Prow r. *Cr: 239/3.*

Fine style, F £ 40



448



449



450



451



452



453



454



**C. CVR F TRIGE series, Rome c. 135**

448 Semis, 10.36 g. Saturn head r. / Prow r. *Cr: 240/2a.*

VF £ 30

449 Another, 5.95 g., variant. *Cr: 240/2b.*

Rough brown tone, VF £ 30

450 Another of the same, 5.89 g.

Pitted, F £ 20

451 Triens, 5.91 g. Minerva head r. / Prow r. *Cr: 240/3a.*

Nicely patinated, good VF £ 50

452 Quadrans, 5.43 g. Hercules bust r. / Prow r. *Cr: 240/4a.*

About EF £ 80

453 Another, 3.38 g., variant. *Cr: 240/4b.*

Brown tone, VF £ 20

454 Another of the same, reduced, 3.05 g.

F £ 10



455



456



457



458



**L. TREBANI series, Rome c. 135**

- |     |   |   |       |
|-----|---|---|-------|
| 455 | Semis. 6.95 g. Saturn head r. / Prow r. <i>Cr.</i> 241/ 2.      | <i>Rare.</i> Glossy black patina, VF / EF | £ 80  |
| 456 | Quadrans. 2.83 g. Heracles bust r. / Prow r. <i>Cr.</i> 241/ 4. | About EF                                  | £ 50  |
| 457 | Another. 4.10 g.  | VF  | £ 30  |
| 458 | Sextans. 3.02 g. Mercury's head r. / Prow r. <i>Cr.</i> 241/ 5. | <i>Rare.</i> Earthy patina, VF            | £ 250 |



459



460



461



**C. AVG series, Rome c. 135**

- |     |   |    |      |
|-----|---|----|------|
| 459 | Semis. 13.74 g. Saturn head r. / Prow r. <i>Cr.</i> 242/ 2.     | VF | £ 50 |
| 460 | Quadrans. 5.33 g. Hercules bust r. / Prow r. <i>Cr.</i> 242/ 4. | VF | £ 30 |
| 461 | Another. 3.46 g.  | F  | £ 10 |



462



463



464



465



**C. ABVRI GEM series, Rome c. 134**

- |     |  |             |      |
|-----|--|-------------|------|
| 462 | Quadrans. 3.70 g. Hercules head r. on club/ Prow r. <i>Cr.</i> 244/ 3. | F / good F  | £ 10 |
| 463 | Another. 6.02 g.   | Fair/ F     | £ 10 |
| 464 | A third. 6.56 g.   | Nearly F    | £ 10 |
| 465 | A fourth. 5.74 g.  | Good F / VF | £ 20 |



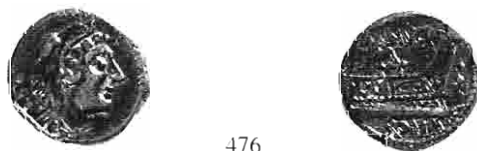
**M. MARCI MN. F series, Rome c. 134**

- |     |  |   |       |
|-----|--|---|-------|
| 466 | Triens, 7.69 g. Minerva hear. / Prow r. <i>Cr: 245/2.</i>      | Dark green patina, good VF                | £ 175 |
| 467 | Quadrans, 7.11 g. Hercules bust r. / Prow r. <i>Cr: 245/3.</i> | Very strong style, dark patina, nearly EF | £ 120 |
| 468 | Another, 3.87 g.   | Green patina, VF                          | £ 40  |
| 469 | A third, 3.30 g., variant. <i>Cr: 245/3var.</i>                | F   | £ 20  |
| 470 | A fourth, 3.91 g. <i>Cr: 245/3 (?)</i> .                       | Good F                                    | £ 20  |



**C. NVMITORI series, Rome c. 133**

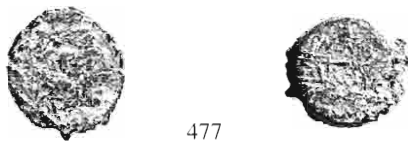
- |     |   |                                     |       |
|-----|---|-------------------------------------|-------|
| 471 | Semis, 7.97 g. Saturn head r. / Prow r. <i>Cr: 246/2.</i>       | Black patina, nearly VF             | £ 30  |
| 472 | Another, 7.67 g.  | Green patina, VF                    | £ 30  |
| 473 | A third, 9.44 g.  | Granulated surfaces, F / VF         | £ 30  |
| 474 | Triens, 5.38 g. Minerva head r. / Prow r. <i>Cr: 246/3.</i>     | Splendid style and black patina, EF | £ 140 |
| 475 | Quadrans, 5.43 g. Hercules head r. / Prow r. <i>Cr: 246/4a.</i> | VF                                  | £ 40  |



**L. MINVCIV series, Rome c. 133**

- |     |  |                             |      |
|-----|--|-----------------------------|------|
| 476 | Quadrans, 4.18 g. Hercules bust r. / Prow r. <i>Cr: 248/4.</i> | Glossy brown tone, about EF | £ 70 |
|-----|--|-----------------------------|------|





477

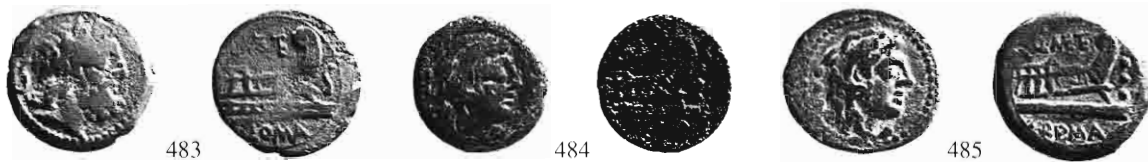
**P. MAE ANT M.F series, Rome c. 132**

477 Quadrans, 3.56 g. Hercules head r. / Prow r. *Cr.* 249/3. Mediocre £ 10



**M. FABRINI series, Rome c. 132**

478	Triens, 6.21 g. Minerva head r. / Prow r. <i>Cr.</i> 251/2.	Earthy green patina, good VF	£ 60
479	Quadrans, 3.35 g. Hercules bust r. / Prow r. <i>Cr.</i> 251/3.	F	£ 20
480	Another, 4.23 g.	Good F / VF	£ 20
481	A third, 4.91 g.	Good black patina, VF	£ 30
482	A fourth, 5.29 g.	Pitted green patina, F	£ 20



**Q. METE series, Rome c. 130**

483	Semis, 5.08 g. Saturn head r. / Prow r. <i>Cr.</i> 256/2a.	Fair	£ 5
484	Quadrans, 4.85 g. Hercules head r. / Prow r. <i>Cr.</i> 256/4a.	Good F	£ 20
485	Another, 5.89 g.	VF	£ 30



**M. VARGV series, Rome c. 130**

486	Semis, 8.84 g. Saturn head r. / Prow r. <i>Cr.</i> 257/2.	Green patina, good F / VF	£ 60
487	Triens, 4.89 g. Minerva head r. / Prow r. <i>Cr.</i> 257/3.	<i>Rare.</i> F	£ 80
488	Quadrans, 4.73 g. Hercules bust r. / Prow r. <i>Cr.</i> 257/4.	Good F	£ 20
489	Another, 3.77 g.	F	£ 10



**CN. DOMIT series, Rome c. 128**

490	Semis, 10.68 g. Saturn head r. / Prow r. <i>Cr.</i> 261/2.	Fine dark brown tone and strong style, good VF	£ 80
491	Triens, 5.06 g. Minerva head r. / Prow r. <i>Cr.</i> 261/3.	<i>Rare.</i> VF	£ 90
492	Quadrans, 3.60 g. Hercules bust r. / Prow r. <i>Cr.</i> 261/4.	Good green patina, nearly EF / VF	£ 60
493	Another, 3.17 g.	Scratched, about VF	£ 20
494	A third, 3.35 g.	F	£ 10



**Elephant's head series, Rome c. 128**

495	Semis, 8.20 g. Saturn head r. / Prow r. <i>Cr.</i> 262/2.	Fair/ F	£ 20
496	Another, 4.31 g.	Fair	£ 10
497	Quadrans, 4.17 g. Hercules bust r. / Prow r. <i>Cr.</i> 262/4.	F / VF	£ 20



**M. METELLVS Q.F series, Rome c. 127**

498	Semis, 6.92 g. Saturn head r. / Prow r. <i>Cr.</i> 263/3a.	Small eroded flan, VF	£ 30
499	Another, 9.76 g., variant. <i>Cr.</i> 263/3b.	VF	£ 30
500	Quadrans, 3.53 g. Hercules bust r. / Prow r. <i>Cr.</i> 263/5b.	VF	£ 20
501	Another, 5.41 g., variant, obverse club visible. <i>Cr.</i> 263/5b var.	F	£ 20



502

**Q. MAX series, Rome c. 127**

502 Quadrans, 5.92 g. Hercules bust r. / Prow r. *Cr.* 265/3.

Fair £ 20

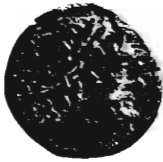


503

**C. CASSI series, Rome c. 126**

503 Dodrans, 13.36 g. Vulcan bust r. / Prow r. *Cr.* 266/2.

Rare. VF £ 220



504



505



506

**T.Q. series, Rome c. 126**

504 Semis, 9.39 g. Saturn head r. / Prow r. *Cr.* 267/2.

Good F £ 20

505 Triens, 17.08 g. (*sic*). Minerva head r. / Prow r. *Cr.* 267/3. *Unpublished (?)*

VF £ 100

It is difficult to believe that this heavy coin in the style of *Cr.*210 does not belong to an earlier series in the name of another T.Q.

506 Quadrans, 4.02 g. Hercules bust r. / Prow r. *Cr.* 267/4.

Rare. F £ 50



507

**C. METELLVS series, Rome c. 125 or later**

507 Quadrans, 4.61 g. Hercules head r. / Prow r. *Cr.* 269/4.

Rare. Good green patina, about VF £ 60



508



509

**Anonymous with mountain goat series, Rome c. 123 or later**

508 Quadrans, 3.17 g. Hercules head r. / Prow r. *Cr.* – *Unpublished.*

Brown tone. VF £ 300

509 Another, 2.91 g., of varied style.

Green patina. VF £ 300

This unknown series should be associated with the Caecilii Metelli, and especially with C. Caecilius Metellus *Caprarius. cos 113*, whose agnomen might have been gained in a brother's. Q. Caecilius Metellus', Balearic campaign in 123-2, where the little island of Capraria (Isle of Goats) off the s. point of Balaeris Maior (Mallorca), now Caborra was also taken. Plin. 3. 5. 11. 78. *Agnomina* were frequently derivative, as in the case of another brother Diadematus, from a head bandage.



511



510



512



513



**Anonymous series, Rome c. 135-125**

- |     |  |                                       |       |
|-----|--|---------------------------------------|-------|
| 510 | Semis, 10.37 g. Saturn head r. / Prow r. <i>Cr.</i> 272/1. | Glossy brown tone and high relief. VF | £ 220 |
| 511 | Another, 6.84 g.   | Nearly VF                             | £ 30  |
| 512 | A third, 9.70 g.   | VF / F                                | £ 30  |
| 513 | A fourth, 9.30 g.  | VF                                    | £ 100 |



514

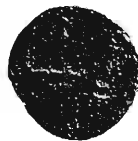


**C. FONT series, Rome c. 114 or 113**

- |     |  |   |       |
|-----|--|---|-------|
| 514 | Quadrans, 5.20 g. Hercules head r. / Prow r. <i>Cr.</i> 290/5. | Medallic appearance and fine straw tone, EF | £ 180 |
|-----|--|---|-------|



515



516



**L. PHILIPPVS series, Rome c. 113 or 112**

- |     |  |                               |      |
|-----|--|-------------------------------|------|
| 515 | Quadrans, 2.61 g. Hercules bust r. / Prow r. <i>Cr.</i> 293/2. | Very pitted, F                | £ 20 |
| 516 | Another, 7.15 g.   | Lovely light green patina, VF | £ 50 |



517



**CN. BLASIO CN. F. series, Rome c. 112 or 111**

- |     |  |  |       |
|-----|--|--|-------|
| 517 | As, 23.14 g. Janus head. / Victory and trophy. <i>Cr.</i> 296/2. | Rare. Apple-green patina. Mediocre / F | £ 200 |
|-----|--|--|-------|



**L. MEMMI GAL series, Rome c. 106.**

- |     |  |  |      |
|-----|--|--|------|
| 518 | As, 22.52 g. Janus head/ Prow r. <i>Cr. 313/2.</i>             | Chipped flan. VF                               | £ 50 |
| 519 | Semis, 9.54 g. Saturn head r. / Prow r. <i>Cr. 313/3.</i>      | Creamy pale green patina. VF                   | £ 80 |
| 520 | Quadrans, 6.14 g. Hercules head r. / Prow r. <i>Cr. 313/4.</i> | Palest possible green patina, obverse weak, VF | £ 30 |



**L. H. TVB series, Rome c. 105**

- |     |  |                     |      |
|-----|--|---------------------|------|
| 521 | Uncia, 4.20 g. Roma head r. / Inscription in wreath. <i>Cr. 315/1.</i> | Poor/ VF            | £ 20 |
| 522 | Another, 4.75 g.   | Good brown tone, VF | £ 50 |



**L. POMPON MOLO series, Rome c. 97(?)**

- |     |  |  |       |
|-----|--|--|-------|
| 523 | As, 31.98 g. Janus head. / Prow r. <i>Cr. 334/2.</i>           | F  | £ 30  |
| 524 | Semis, 17.16 g. Saturn head r. / Prow r. <i>Cr. 334/3a.</i>    | VF   | £ 30  |
| 525 | Another, variant, 15.46 g. <i>Cr. 334/3b.</i>                  | Magnificent sage-green patina, as struck, EF | £ 180 |
| 526 | Quadrans, 6.81 g. Hercules bust r. / Prow r. <i>Cr. 334/5.</i> | F / VF                                       | £ 30  |



527



528



**C. MALL, A. ALBINVS S.F., L. METEL series, Rome c. 96 (?)**

- |     |   |                                    |      |
|-----|---|------------------------------------|------|
| 527 | As, 23.78 g. Janus head. / Prow r. <i>Cr.</i> 335/4.            | Obverse drilled. F                 | £ 20 |
| 528 | Quadrans, 7.92 g. Hercules bust r. / Prow r. <i>Cr.</i> 335/7a. | Fine style and dark patination. VF | £ 50 |



529



530



**D. SILANVS series, Rome c. 91**

- |     |  |                                       |       |
|-----|--|---------------------------------------|-------|
| 529 | As, 10.89 g. Janus head. / Prow r. <i>Cr.</i> 337/5. | Nicely patinated but some erosion. VF | £ 200 |
| 530 | Another, 9.25 g.                                     | A rough VF                            | £ 40  |



531



532



533



534



535



536



537



**L. P. D. A. P. series, Rome c. 91**

- |     |   |                   |      |
|-----|---|-------------------|------|
| 531 | As, 9.80 g. Janus head. / Prow r. <i>Cr.</i> 338/1. An uncertain attribution. | Mediocre          | £ 10 |
| 532 | Another, 9.70 g.  | Mediocre          | £ 10 |
| 533 | Semis, 7.40 g. Saturn head r. / Prow r. <i>Cr.</i> 338/2.                     | F                 | £ 20 |
| 534 | Another, 8.92 g.  | VF/EF             | £ 40 |
| 535 | A third, 5.95 g.  | VF                | £ 50 |
| 536 | Triens, 3.52 g. Minerva head r. / Prow r. <i>Cr.</i> 338/3.                   | Mediocre          | £ 10 |
| 537 | Another, 5.11 g.  | Metallic tone, VF | £ 30 |



**Anonymous series, Rome c. 91**

538	Semis, 9.46 g. Saturn head r. / Prow r. <i>Cr.</i> 339/2.	F	£ 30
539	Triens, 6.15 g. Minerva head r. / Prow r. <i>Cr.</i> 339/3.	Rare. F	£ 70
540	Another, 4.53 g.	F / Fair	£ 20
541	A third, 4.07 g.	Fair	£ 10
542	Quadrans, 2.71 g. Hercules head r. / Prow r. <i>Cr.</i> 339/4a var. ( <i>club on obverse</i> )	F	£ 20
543	Another, 3.57 g., variant. <i>Cr.</i> 339/4d.	VF	£ 30
544	A third, 3.87 g. <i>Cr.</i> 339/4d.	Good F	£ 20
545	A fourth, 3.70 g.	F / VF	£ 20



546



547



548



549



550



**L. PISO L. F. L. N. FRVGI series, Rome c. 90**

546	As, 8.31 g. Janus head. / Prow r. <i>Cr.</i> 340/4.	Mediocre	£ 10
547	Another, 8.86 g.	Pale brown tone, F	£ 20
548	Semis, 6.34 g. Saturn head r. / Prow r. <i>Cr.</i> 340/5a.	Good F	£ 20
549	Another, 6.35 g.	F	£ 20
550	A third, variant, 5.58 g. <i>Cr.</i> 340/5a-b.	F	£ 20



551



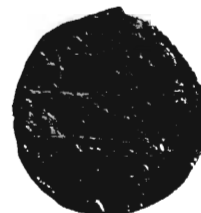
553



552



554

**Q. TITI series, Rome c. 90**

- |     |  |             |       |
|-----|--|-------------|-------|
| 551 | As, 9.64 g. Janiform lead of Liber / Prow r. <i>Cr. 341/4a (?)</i>   | Fair        | £ 10  |
| 552 | Another, 12.54 g.  | Corroded, F | £ 20  |
| 553 | A third, 9.05 g. Clearly <i>Cr. 341/4a</i> . Exceptional apple-green patina and almost as struck in excellent style, good VF |             | £ 180 |
| 554 | A fourth, 11.40 g.   | F           | £ 20  |



555



556



557



558



559



561



562



560



562

**C. VIBIVS C.F. PANSA series, Rome c. 90**

- |     |  |                         |       |
|-----|--|-------------------------|-------|
| 555 | As, 10.06 g. Janus head. / Three prows r. <i>Cr. 342/7a</i> .  | A poorly struck VF      | £ 50  |
| 556 | Another, 14.52 g.  | Fair                    | £ 10  |
| 557 | A third, 6.94 g., variant. <i>Cr. 342/7c</i> .   | Green patina, nearly VF | £ 40  |
| 558 | A fourth, 13.99 g.   | Fair/ F                 | £ 20  |
| 559 | A fifth, 11.88 g.  | VF                      | £ 70  |
| 560 | A sixth, 11.36 g., variant, with Janus beardless in quadrigatus style. <i>Cr.- cf. 342/7e</i> . Obverse gouged, good F |                         | £ 300 |
| 561 | A seventh, variant, 13.93 g. <i>Cr. 342/7e-f</i> .   | Good F                  | £ 20  |
| 562 | Semis, 5.13 g. Saturn head r. / Prow r. <i>Cr. 342/8a</i> .  | F                       | £ 20  |





563



564



567



565



566



**L. TITVRI L. F. SABINVS series, Rome c. 89**

- |     |  |                             |       |
|-----|--|-----------------------------|-------|
| 563 | As, 8.77 g. Janus head. / Prow r. <i>Cr. 344/ 4a.</i>                      | Light green patina, F       | £ 30  |
| 564 | Another, 11.13 g.  | Good F                      | £ 30  |
| 565 | A third, 10.76 g., variant. <i>Cr. 344/ 4b.</i>                            | Irregular flan, VF          | £ 40  |
| 566 | A fourth, 10.44 g., variant. <i>Cr. 344/ 4c.</i>                           | Mediocre/ VF                | £ 20  |
| 567 | A fifth, 10.22 g., variant. <i>Cr. 344/ 4c var. (SABINVS) Unpublished.</i> | Glossy black patina, good F | £ 200 |



568



**CN. LENTVL series, Rome c. 88**

- |     |  |             |      |
|-----|--|-------------|------|
| 568 | As, 9.17 g. Janus head. / Prow r. <i>Cr. 345/ 3.</i> | Smoothed, F | £ 20 |
|-----|--|-------------|------|



569



570



571





572



573



574



**C.CENSORIN series, Rome c. 88**

569	As, 8.39 g. Numa and Ancus heads r. / Two arches and prow <i>Cr.</i> 346/3.	About F	£ 50
570	Another, 11.34 g.	Good brown tone, but striking weaknesses, VF	£ 100
571	A third, 11.43 g.	Fine dark patina, VF-EF	£ 200
572	As, 9.86 g. Numa and Ancus heads r. / Two ships crossing. <i>Cr.</i> 346/4a.	Encrusted patina, VF	£ 80
573	Another, 13.47 g.	Nearly VF	£ 100
574	A third, 11.41 g.	F	£ 40



575



576



577



**L. RVBRI DOSSENI series, Rome c. 87**

575	As, 8.48g. Janus head with altar/ Prow r. <i>Cr.</i> 348/5.	Fair / F	£ 20
576	Another, 9.90 g.	Fire-damaged, F-VF	£ 30
577	As, 8.70 g. Janiform Hercules and Mercury heads / Shrine with prow. <i>Cr.</i> 348/6.	Mediocre / F	£ 40



578



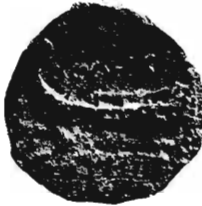
581



579



580



582



583



7A2 - 658 - V5 D 10 000 2 2 25

- 578 As, 11.22 g. Janus head. / Prow r. Cr: 350A/ 3b.
- 579 Another, 14.16 g. Cr: 350A/ 3c.
- 580 A third, 13.61 g., variant. Cr: 350A/ 3d.
- 581 A fourth, 13.93 g., variant. Cr: 350A/ 3e.
- 582 A fifth, 11.32 g., as previous.
- 583 A sixth, 11.81 g., variant. Cr: 350A/ 3f.

- Green - brown patina, F £ 20
- Pitted, nearly VF £ 30
- Patina encrusted, about VF £ 30
- Superb style, good VF £ 100
- Good F £ 40
- F / VF £ 20



584



585



586



**Anonymous series, Rome c. 86**

- 584 Semis, 5.70 g. Saturn head r. / Prow l. Cr: 350B/ 1.
- 585 Another, 6.75 g.
- 586 A third, 4.63 g.

- Olive-green patina, VF £ 120
- Metal flaw, nearly VF £ 40
- Overstruck, F £ 30



587

**MN. FONTEI C. F. series, Rome c. 85**

587 As, 15.60 g. Janus head. / Prow l. *Cr.* 353/3.

VF £ 70



588



589

**C. LICINIUS L.F. MACER series, Rome c. 84**

588 As, 14.42 g. Janus head. / Male figure on prow r. *Cr.* 354/3a.

Fair £ 20

589 Another, 13.24 g., variant. *Cr.* 354/3b.

F £ 30



590



591



592



**C. CASSIVS, L. SALINAT series, Rome c. 84**

590 As, 7.85 g. Janus head. / Prow r. *Cr.* 355/1a-b.

Lovely green patina, poor strike. F-VF £ 30

591 Another, 10.93 g., variant. *Cr.* 355/1f.

F £ 30

592 A third, 8.19 g., as previous.

Poor/ Fair £ 10

THE POST-SEXTANTAL AS REVIVED, AND OTHER REFORMS



593

Cn. Pompeius Magnus Imp., Spain c. 46-45.

593 As, 25.88 g. Janus head. / Prow r. Cr. 471/1. RPC 486.

Rare. Black patina, VF £ 200



594



595



596



597



C. Julius Caesar with C. Clovius praef., uncertain North Italian mint c. 46-45

594 Æ, 13.57 g. Victory bust r. / Minerva (Medica ?) l. Cr. 476/1a. RPC 601.

VF £ 200

595 Another, 15.00 g.

Good F / VF £ 100

596 A third, 13.68 g., variant, with star. Cr. 476/1b.

Rare. F / good F £ 80

597 A fourth, as previous, 16.67 g.

A little porous, VF £ 120



598



599



600



601



**Magnus Pius Imp f., with Eppius leg., Spain c. 45-44**

- |     |  |                     |       |
|-----|--|---------------------|-------|
| 598 | As, 20.47 g. Janus head, with in centre. altar. / Prow r. <i>Cr. 478/ 1a. RPC 487.</i> | F                   | £ 50  |
| 599 | Another, 26.86 g. Struck on a large flan, perhaps a test piece.                        | Nicely patinated. F | £ 80  |
| 600 | A third, 16.06 g., variant, without altar or legend. <i>Cr. 478/ 1b.</i>               | <i>Rare.</i> F      | £ 180 |
| 601 | A fourth, as previous. 17.70 g.  | <i>Rare.</i> F / VF | £ 120 |



602



603



604



605



606



607



608



**Sextus Pompeius, uncertain Sicilian mint from 45**

- |     |   |  |       |
|-----|---|--|-------|
| 602 | As, 22.11 g. Janus head with features of Pompeius Magnus. / Prow r. <i>Cr. 479/ 1. RPC 671.</i> | Magnificent portraiture and with a lovely pale chestnut tone, as struck. Superb. | £ 600 |
| 603 | Another, 18.69 g.   | Smoothed green patina, good F  | £ 250 |
| 604 | A third, 15.26 g.   | Defects in the good patina, VF   | £ 250 |
| 605 | A fourth, 16.41 g.  | Badly struck and with file-marks, but green patina, about VF                     | £ 200 |
| 606 | A fifth, 23.41 g.   | Excellent style and good blue-green patina, VF                                   | £ 600 |
| 607 | A sixth, 22.12 g.   | Summary portraits in sharp high relief, brown tone, about EF                     | £ 400 |
| 608 | A seventh, 15.43 g.   | Strong portraits and green-brown patina on filed flan, some weakness, VF-EF      | £ 250 |



**Q. Oppius pr., uncertain Eastern mint c. 88(?)**

- 609 Æ 12.22 g. Venus head r. / Victory standing to front. *Cr. 550/1. RPC 602A. Very rare.* Green-brown patina, VF £ 900  
 610 Æ 11.49 g. Venus head r. / Victory walking l. *Cr. 550/3d. RPC 602/1.* Rare. Grey patina, VF £ 650

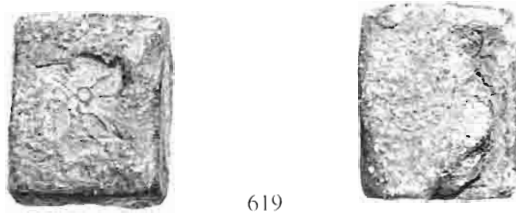
Can these provincial "asses" be linked to the coinage of Sulla and his victory over Mithradates Eupator? Sulla's Greek aurei and denarii of 84 (not 81, *pace Cr. 375n.*) have an almost identical obverse with that of *Cr. 550/2d.*



**Contemporary forgeries**

- |     |   |                              |      |
|-----|---|------------------------------|------|
| 611 | As, 26.29 g. c. 100; Janus is beardless.  | Fair-F                       | £ 40 |
| 612 | As, 9.63 g. c. 90; imitation of coin of C. Vibius Pansa, cf. <i>Cr. 342/7a-d.</i> | F-VF                         | £ 30 |
| 613 | Semis, 4.33 g. c. 130; much as <i>Cr. 206/3</i> , but <i>S</i> for <i>SAFRA</i>   | Good F                       | £ 20 |
| 614 | Semis, 4.42 g. c. 150 Cf. <i>Cr. 197-198B/2.</i>                                  | F                            | £ 20 |
| 615 | Semis, 2.96 g., similar.  | Lighter and cruder, F        | £ 20 |
| 616 | Quadrans, 2.49 g. c. 150. Cf. <i>Cr. 199/5.</i>                                   | VF                           | £ 40 |
| 617 | Quadrans, 2.41 g. c. 125. Cf. <i>Cr. 251/3n. and 269/4.</i>                       | Good F                       | £ 30 |
| 618 | Quadrans, 1.96 g. c. 91. Cf. <i>Cr. 339/4.</i>                                    | Good style but small flan. F | £ 30 |

## Lead weight, Rome after 211



619

619 Rectangular tablet. Pl. 35.59 g. Helmeted head of Roma l., incuse. / Plain.

VF £ 150

If the weight is non-monetary, it will be presumably for a *sexuncia* or 1-1/2 uncia amount at a standard of 40.5 g., rather approximately observed. If monetary, it will represent eight denarii of 4.5 g. apiece, eight being an important multiplier in Roman accounting.

## Republican Provincial Coinage

### SPAIN



#### Carteia, c. 50

620 Q.PE DEC. Semis, 10.55 g. Saturn head r. / Prow r. *AB 482*.

Dark green patina, VF £ 40

621 Imitative semis, 11.88 g. Saturn head r. / Prow r.: to r., crescent. *AB 2042*.

Dark patina, F £ 30

#### Cn. Stati Libo praef, uncertain mint c. 29 (?)

622 Semis, 8.25 g. Bare head r. / SACERDOS PRAEF Patera and praefericulum. *RPC 483*. Olive-green patina, F / VF £ 100

### GAUL



623

624

#### Nemausus, c. 40

623 Æ 2.30 g. Helmeted and draped bust r. / NEM COL Hygeia-Valetudo-Salus standing l. *RPC 520*.

Dark brown tone, EF / VF £ 80

The RPC description of this issue is defective.

#### Antipolis, c. 44-43

624 Æ 2.55 g. Venus head r. / Victory r. crowning trophy. *RPC 520*.

Earthy patina, VF £ 50



## SARDINIA



625

### Turris Libisonis, c. 46-40 (?)

- 625 As. 20.27 g. M-L-D-C-P; male head r.; below, plough / Q-A-M-P-C-II-V. Hexastyle temple. *RPC* 622.  
*Rare.* Beautiful olive-green patina, good VF € 800

## SICILY



626



627



628



629



630



631



632



633



634



### Panormus, 1st cent. BC

- |     |   |                                  |       |
|-----|---|----------------------------------|-------|
| 626 | As. 6.92 g. Janus head. / Monogram in wreath <i>Calciati</i> 67.  | Dark tone. VF                    | € 20  |
| 627 | As. 6.25 g. Janus head. / NA / SO in wreath. <i>Calciati</i> 78.  | Good blackish tone. VF / good VF | € 50  |
| 628 | Semis. 3.10 g. Saturn head l. Similar to previous. <i>Calciati</i> 80.                                      | Light green patina. VF           | € 40  |
| 629 | As. 6.00 g. Janus head. / Bird in wreath. <i>Calciati</i> 98.   | Green patina. VF                 | € 50  |
| 630 | As. 6.88 g. Janus head. / Pellet within wreath. <i>Calciati</i> 101.  | Dark green patina. FF            | € 100 |
| 631 | Another. 4.82 g.  | Green patina, about VF           | € 30  |
| 632 | L.ANNI. As. 4.17 g. Janus head. / Bearded head wearing pileus (Vulcan) r. <i>Calciati</i> 151. <i>Rare.</i> | Green patina. F/VF               | € 150 |
| 633 | Sextans. 2.17 g. Laureate Apollo head l. / Q and two corn ears. <i>Calciati</i> 193.                        | Dark patina. F                   | € 40  |
| 634 | Sextans. 3.36 g. Veiled female head l. / Barley-wreath. <i>Calciati</i> 197.                                | Olive-green patina. F/VF         | € 50  |

CRETE



635



636



**Cnossos (?), c. 40**

635 L. Lollius. Æ 9.38 g. Artemis Dictynna head r. / Stag r. *RPC 909.*

Brown tone. F £ 80

636 Crassus. Æ 13.21 g. Crocodile r. / Prow r. *RPC 914.*

Brown tone. F/VF £ 250

ACHAEA



637



638



639



**Corinth, c. 39-36**

637 M. Antonius with P. Aebutius and C. Pinnius Ilviri. Æ 6.74 g. Head of M. Antonius I. / Prow l. *RPC 1124.*

*Very rar.* Grey-green patina. F £ 200

**Cranium (?), c. 30-28**

638 C. Proculius L. f. Æ 2.84 g. Jupiter head r. / Labrys. *RPC 1360.*

Green-brown patina chipped at rim. VF £ 50

**Buthrotum, c. 44**

639 P. Dastidius and L. Cornelius Ilviri. Æ 6.08 g. Zeus head r. / Bull standing r. *RPC 1378.* Dark green patina. VF £ 50



**M. Antonius. Fleet coinage, East c. 38-37**

- 640 L. Sempronius Atratinus. Dupondius, Æ 9.60 g. Head of Antony facing bust of Octavia. / Ship under sail r. *Amandry, SNR 65, pl. 13, 4 and SNR 69, pl. 15, c4a. RPC 1455.* Brown tone. F £ 200
- 641 M. Oppius Capito. Light sestertius, Æ 13.76 g. Head of Antony facing bust of Octavia. / Quadriga of hippocamps. *Amandry SNR 66, Pl. 20, A1. RPC 1468.* Brown tone, pitted and Fair £ 150
- 642 Light sestertius, Æ 12.95 g., similar. *Amandry SNR 66, pl. 20, A9.* Green-brown patina, weakly struck, VF £ 1,200
- 643 As. Æ 3.68 g. Jugate heads of Antony and Octavia r. / Ship under sail r. *RPC 1470.* Green patina. F / VF £ 100

**SYRIA**



**Sistripia (?), c. 38-37**

- 644 L. Calpurnius Bibulus. Heavy sestertius, Æ 29.37 g. Head of Antony facing bust of Octavia. / Dynasts as Neptune and Aphrodite in quadriga of hippocamps r. *Amandry, SNR 65, Pl. 9, A2. RPC 4088.* Dark green patina, pierced and F / VF £ 500

**Chalcis, c. 32/ 31**

- 645 M. Antonius and Cleopatra. Æ 6.00 g. Diademed bust of Cleopatra r. / Head of Antony r. *RPC 4771.* Fine light green patina. EF £ 300

**DECAPOLIS**



**Gadara, 64/ 63**

- 646 Æ 11.51 g. Hercules bust l., club on shoulder. / LA' / ΠΩΜΗΣ Ram of galley r. *Spijkerman p. 128, 1.* Dark patina, good VF £ 250

The so-called Pompeian era (64-63 BC) refers to the liberation of the area from Greek and Hasmonean occupation by Pompey, in substitution for the Seleucid era.

